

POST OFFICE ANNUAL REPORT



ANNUAL REPORT
of the
POSTMASTER GENERAL
of the
REPUBLIC OF SOUTH AFRICA
for
1967-68

THE GOVERNMENT PRINTER, PRETORIA

Contents

	PAGE
Foreword	v
Financial Activities of the Post Office	1
Investment Facilities	1
Financial Services rendered on behalf of other Government Departments	1
Conferences Abroad	2
Staff	2
Recruiting and Training	2
Postal	3
Buildings	5
Telecommunication	6
Organisation and Methods	10
Post Office Terminology Committee	11
Motor Transport	11
Public Relations	11
Engineering Division	12
Stores Division	14
Statistical Tables	15
Post Office Organisation Chart... ..	30



The Honourable M. C. G. J. van Rensburg, Minister of Posts and Telegraphs.

Cover

The new post office building at Strand is the first post office building officially opened by Mr. Van Rensburg after his assumption of office as Minister of Posts and Telegraphs. On that occasion the Minister said that one of his main objectives would be a happy and satisfied post office staff, which required, *inter alia*, pleasant working conditions and agreeable accommodation. A high standard would be maintained in regard to the construction and design of post office buildings, and it would be taken to ensure that all new post office buildings would be assets to the places and communities concerned.

Foreword

It is gratifying to issue the accompanying report on the activities of the Post Office during the financial year 1967/68. It was a year in which good progress was again made with the extension and improvement of the various post office services. Under the Department's new dispensation which came into operation after the close of the financial year, we look forward to further rapid post office expansion, especially in the telecommunications field, in order to keep pace with the increasing demands which are made upon the Post Office by the sustained economic and social growth of the country.

New Ministerial control

On 8th February, 1968, we were privileged to welcome the Honourable M. C. G. J. van Rensburg as the new Minister of Posts and Telegraphs. We assure him of our full support and co-operation at all times.

To the former Minister of Posts and Telegraphs, the Honourable Dr. A. Hertzog, we convey appreciation of his services to the Post Office over a number of years.

Business dispensation for the Department

Legislation was passed during the 1968 Parliamentary Session to provide for the affairs of the Post Office to be managed on business principles. The legislation entails that the Post Office will in future be run as a State business undertaking and that its profits will be available for direct application to the development of its services. With regard to staff management and also in other fields, the Department was granted greater freedom of action. The relative legislation (Act 67 of 1968) came into force on 1st July, 1968.

Post Office Staff Board

The Post Office Staff Board—an autonomous statutory body instituted by section 7 of Act 67 of 1968—was constituted as follows with effect from 1st July, 1968:—

Chairman—Mr. J. G. Krige.

Members—Messrs. M. A. Buys, J. Z. Venter.

It is mentioned with regret that Mr. Buys passed away on 25th October, 1968. He was succeeded by Mr. L. J. Loader.

Reorganisation of the Department

With effect from 1st July, 1968, the various head office divisions of the Department were reorganised under three Deputy Postmasters General. They are—

Mr. D. P. J. Retief—Telecommunications and Technical Services.

Mr. L. F. Rive—Finance and Planning.

Mr. N. J. A. Jordaan—Staff and Posts.

Under the supervision of the Minister and the Postmaster General, the three Deputy Postmasters General are responsible for effective control over the respective branches of the Department's activities and for proper and co-ordinated planning to ensure adequate and efficient services.

Further reorganisation took place on 1st January, 1969, when the nineteen decentralised divisional organisations of the Department were divided into seven regional organisations, each under the control of a regional director. This will ensure better co-ordination of activities in the different areas and generally improved services to the public.

Various

Considerable progress was made with the extension of the national subscribers' trunk dialing system, which enables telephone subscribers in automatic exchange areas to dial one another direct and also to dial direct to manual exchanges at other places. In order to speed up the extension of the telephone system, two contracts were awarded whereby official suppliers of telecommunications equipment undertake the installation of automatic exchanges. The contractors make exclusive use of their own staff and the Department's trained technical personnel are accordingly released for other essential installation and maintenance duties. More than 90 per cent of the telegraph system has already been converted to automatic working. Encouraging results are being obtained with the mail sorting machine in Pretoria, while other mechanical aids have been ordered to facilitate and speed up the handling of mail. These aids will be delivered within the next few months. Good progress is also being made with the programming of systems preparatory to the computerisation of various accounting procedures.

Expression of thanks

To all members of the post office staff we should like to convey an expression of sincere appreciation of their good and efficient services. Without the loyal support and co-operation of the staff the Department would not have achieved what it has. We are also grateful for the assistance rendered by other Government Departments with regard to the transition of the Post Office from its old to its new dispensation. Special mention is made of the Departments of Finance, Public Works, Agricultural Credit and Land Tenure, Community Development and Transport as also the Public Service Commission, the Treasury, the Controller and Auditor General, the State Tender Board and the Government Printer.



13th January, 1969.

Postmaster General.

FINANCIAL ACTIVITIES OF THE POST OFFICE

Profit and Loss

For the financial year 1967-68 the commercial account showed a profit of R23,444,764 compared with R10,496,667 for 1966-67. The increase is due mainly to the increased charge for metered telephone call units.

Revenue and Expenditure (Cash Transactions)

Post Office business continued to increase as shown in the following comparative tables in respect of the three main services of the Department:—

REVENUE

Service	1965-66	1966-67	1967-68
	R	R	R
Postal.....	29,193,854	30,263,021	33,074,407
Telegraphs.....	10,822,601	12,229,718	13,241,088
Telephones.....	70,234,220	78,723,465	94,795,463
TOTAL.....	110,250,675	121,216,204	141,110,958

EXPENDITURE

Service	1965-66	1966-67	1967-68
	R	R	R
Postal.....	31,354,164	35,393,320	36,606,402
Telegraphs.....	7,800,594	8,884,187	9,092,879
Telephones.....	41,203,068	47,037,200	49,852,909
TOTAL.....	80,357,826	91,314,707	95,642,190

Turnover

The total turnover increased by R102,448,626 to R834,451,250. This does not include R66,932,360 in respect of cigarette duty labels sold on credit by the Post Office on behalf of the Department of Customs and Excise. The purchasers paid the cash value of these labels direct to that Department.

INVESTMENT FACILITIES

Post Office Savings Bank

Altogether 145,131 new accounts were opened, 19,973 dormant accounts revived and 199,743 accounts closed. Of the accounts that were closed, 141,053 had been inactive for the past seven years. Their balances were paid into Revenue pending enquiries by the depositors concerned. The total number of open accounts as at 31 March 1968, was 1,676,070—a decrease of 34,589 in comparison with the total at the end of the previous year. The credit balances in depositors' ordinary accounts at the end of the year totalled R140,821,800 compared with R134,544,229 on 31 March 1967.

The balances of amounts invested in Savings Bank Certificates were R11,253,800 as against

R8,002,400 at the end of the previous financial year. Interest amounting to R6,384,679 was credited to depositors in respect of ordinary accounts and Savings Bank Certificates.

At the close of the financial year there were 1,640 post offices at which Savings Bank business could be transacted.

Union Loan and National Savings Certificates

The amount standing to the credit of investors in Union Loan and National Savings Certificates decreased from R108,486,024 to R101,374,122. Investments for the year totalled R15,973,192 and capital repayments R23,085,094. The total amount paid in interest came to R6,361,516.

FINANCIAL SERVICES RENDERED ON BEHALF OF OTHER GOVERNMENT DEPARTMENTS

Inland Revenue

The amount collected on behalf of the Department of Inland Revenue and the Provincial Administrations increased to R3,890,521. There was an increase in the sales of revenue stamps, but the sales of entertainment duty labels continued to decrease. Customs dues collected on behalf of the Department of Customs and Excise amounted to R4,952,854, while cigarette duty labels to the value of R67,142,883 were sold. Loan Levy Certificates to the value of R53,694 were redeemed on behalf of the Department of Inland Revenue.

Pensions

Pensions paid out at post offices on behalf of the Department of Social Welfare and Pensions, the South African Railways and the Provincial Admini-

strations increased to R100,485,405. The number of vouchers increased to 3,534,795.

Treasury

An amount of R46,256,500 was collected for investment in Treasury Bonds. Collections in respect of First Series Savings Bonds which commenced in November 1966, amounted to R6,859,700. The sale of these savings bonds ceased on 31 July 1967.

Community Development

Altogether R3,693,093 was collected on behalf of the Department of Community Development in respect of rentals and loan redemptions. Since June 1946, when the first collections were made, a total of R47,352,012 has been collected.

CONFERENCES ABROAD

In order to keep abreast of new communications techniques and to participate in international deliberations on telecommunications matters, officers of the Department attended the following conferences:—

(i) World Administrative Radio Conference in

Geneva on matters relating to the maritime radio service during September and October 1967.

(ii) Meeting of the World Plan Committee of the International Telegraph and Telephone Consultative Committee in Mexico City from 30 October to 15 November 1967.

STAFF

General

The total personnel in the Post Office increased from 49,812 to 50,876. Staff losses totalled 12,737—an increase of 910 over the figure for the previous year.

Administrative assistants and woman assistants

Altogether 944 administrative assistants and 1,351 woman assistants left the Service. Approximately 50 per cent of the female officers resigned to marry.

The staff position on the Witwatersrand remained a matter for concern. The shortage of suitable living accommodation for married persons and the higher salaries and other benefits offered by outside concerns, were the main reasons for the Department's inability to obtain and retain the services of adequate candidates there. Part-time workers were again employed on mail sorting duties in Johannesburg.

Uniformed staff

Although every effort was made to recruit Whites for appointment as postmen, a serious shortage of personnel in this category was experienced.

In order to maintain a satisfactory mail delivery service, the Department continued, where necessary, to employ Coloureds, Indians and Bantu against posts for Whites as an interim measure.

Apart from the employment of White females on indoor duties in certain larger centres in order to release White males for delivery duties, a small number of White females were taken into employment for delivery duties.

Telephone staff

Difficulty was experienced in recruiting sufficient males for appointment as telephonists, especially in Johannesburg, Pretoria, Pietermaritzburg and other places in Natal, as well as in the Southern and Northern Transvaal areas and in the Orange Free State. At the beginning of 1967, there was no shortage of female candidates, but during the second half of the year, it was not possible to recruit sufficient females in certain areas, especially in Johannesburg. In order to alleviate the shortage of staff in the Johannesburg telephone exchange, experienced female telephonists were again

temporarily transferred there from other control areas. Temporary and part-time telephonists were also employed wherever this was feasible. The employees concerned rendered valuable assistance.

As a result of the conversion of a number of telephone exchanges to automatic working, a number of male and female telephonists and supervisory officers at those exchanges became redundant. No difficulty was experienced in placing them at other telephone exchanges where there were suitable vacancies.

The Department was gratified to have been able to employ four more blind and three more physically handicapped telephonists to operate small private branch exchanges serving Government Departments and Provincial Administrations. Altogether 101 blind and 47 physically handicapped telephonists were employed at the end of the year.

Technical staff

During the year 127 pupil telecommunications technicians completed their training and were promoted to the rank of telecommunications technician. However, there was a shortage of 103 qualified technicians at the end of March 1968.

Three of the technicians recruited overseas returned to their home countries. The contract periods of 36 technicians were extended for a further period of three years, while 15 technicians who acquired South African citizenship, were appointed in a permanent capacity.

Workmen's compensation

Medical treatment was given and compensation paid in the form of either periodical or lump sum payments, to 2,420 officers and employees who were injured in the course of their official duties, as against 2,271 cases during the previous year.

Awards

The staff was again encouraged to submit proposals for improving or simplifying departmental apparatus and equipment or changing existing systems and procedures with a view to effecting savings and promoting efficiency. Awards for six such proposals were made.

RECRUITING AND TRAINING

Administrative assistants and woman assistants

Sustained efforts were made to stimulate the interest of school-leaving boys and girls in a career in the Post Office. Extensive publicity was given by means of advertisements in newspapers and articles

in selected periodicals. Brochures containing full information concerning the various careers in the Post Office were distributed and recruiting pamphlets were placed at the disposal of recruiting officers for distribution at the high schools they visited.

Although the number of female candidates again exceeded the demand, it was not possible to recruit sufficient boys.

During the year 1,594 learners were admitted into training, of whom 893 were appointed during the first quarter of 1968. A total of 372 learners left the Service whilst still in training.

Technical trainees

Altogether 303 and 477 candidates were recruited for training as telecommunications technicians and telephone mechanics, respectively.

In service training

The Department continued to present training courses for supervisors throughout the Republic. A total of 994 officers from various supervisory levels has thus far attended the lectures.

POSTAL

General

The volume of mail handled continued to increase and the Department's attention was constantly engaged in rendering and maintaining an effective mail service.

The total number of postal items handled at post offices in the Republic increased from 1,182,229,000 during 1966-67 to 1,258,165,000 during 1967-68. Further particulars are furnished in the statistical tables elsewhere in this report.

Mechanisation

Good progress was made with the installation of the mail sorting machine at the Pretoria Post Office,

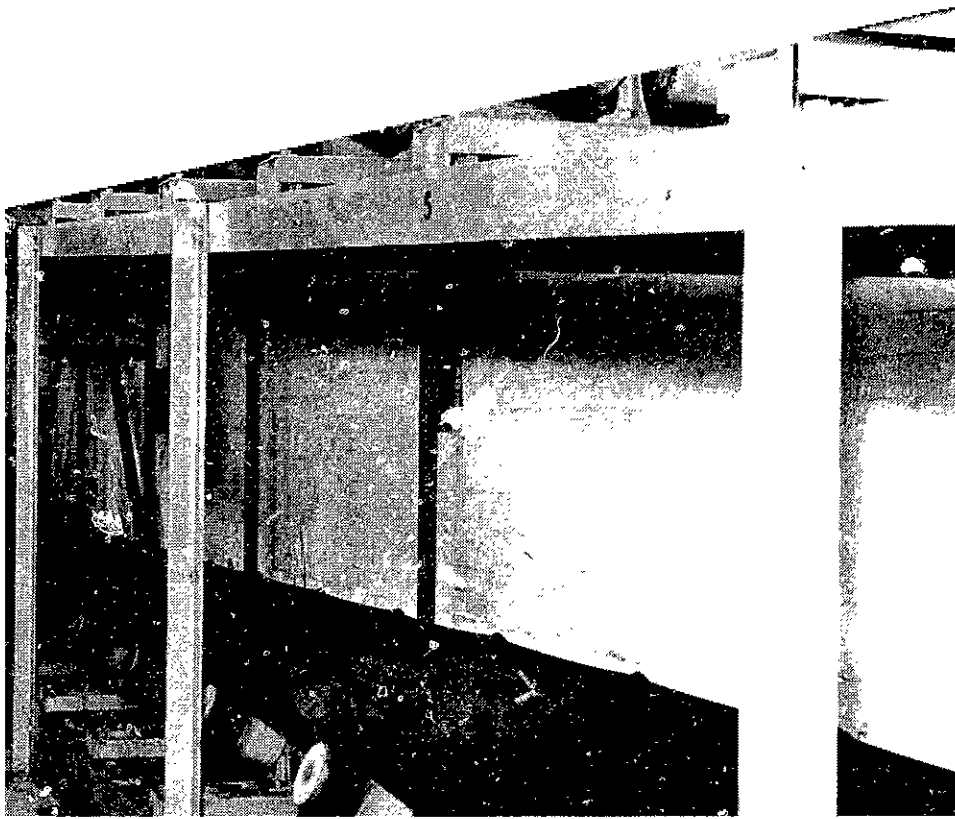
and plans were in hand to provide a number of stamp vending machines at selected post offices and other places.

A study revealed that culling and datestamping machines could be used to advantage at certain post offices in the country and an order was placed for the supply of several of these units.

An underground mail conveyor belt system which conveys mails simultaneously in both directions between the General Post Office and new Railway Station at Cape Town was brought into use. The system was installed to speed up the conveyance of mail bags which were previously conveyed by motor vehicle. About 3,500 bags of mail are conveyed over the system daily.



Coding of mail matter.



Mail conveyor belt, Cape Town.



Intersection in mail conveyor belt, Cape Town.

Furniture

Following a research into the question of designing more efficient furniture for large sorting offices, several improved items were taken into use.

Commemorative stamps

On 31 October 1967, special 2½c and 12½c postage stamps were issued in commemoration of the Church Reformation.

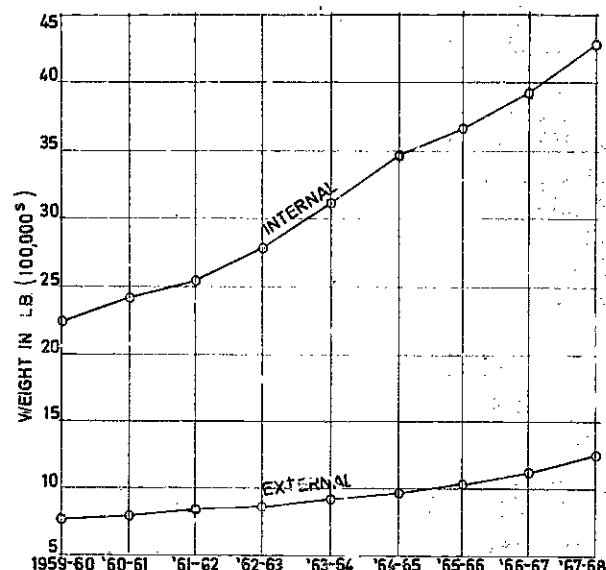
Air mail

Increased use was again made of the air-mail service as revealed by the following comparative figures:—

Service	1966-67	1967-68
	lb	lb
(a) All classes of air mail conveyed within the Republic and to South West Africa.....	3,919,000	4,265,000
(b) All classes of air mail despatched to countries abroad.....	1,137,000	1,249,000
TOTAL.....	5,056,000	5,514,000
(c) Air parcels conveyed within the Republic and to South West Africa [included in (a) above].....	534,000	579,000
(d) Air parcels despatched to countries abroad [included in (b) above].....	65,000*	77,000

*Corrected figure

AIR MAIL



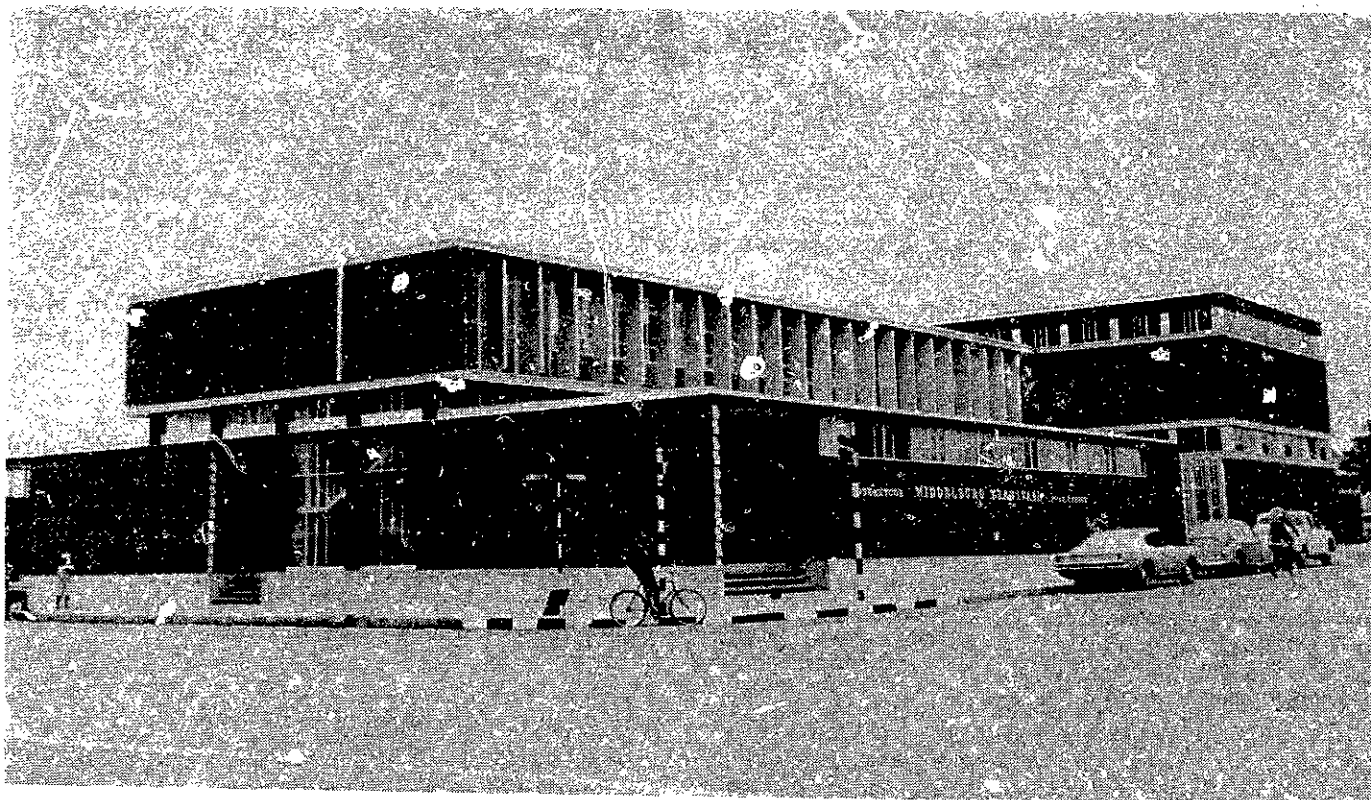
On 5 August 1967, a weekly direct air-mail service was introduced between Johannesburg and Tananarive. Prior to the introduction of this service, air-mail matter for the Malagasy Republic and Reunion could only be forwarded via Nairobi.

The transmission of air-mail items between Johannesburg and Maseru was accelerated as a result of the introduction on 26 February 1968, of a direct air-mail service twice per week.

BUILDINGS

Eighteen major building services were completed at a total cost of R3,642,540. They were (a) new post office buildings at Addo, Braamfontein, Davel, Ixopo, Mkuze, Mount Fletcher and Pretoria West, (b) the enlargement of the post office buildings at

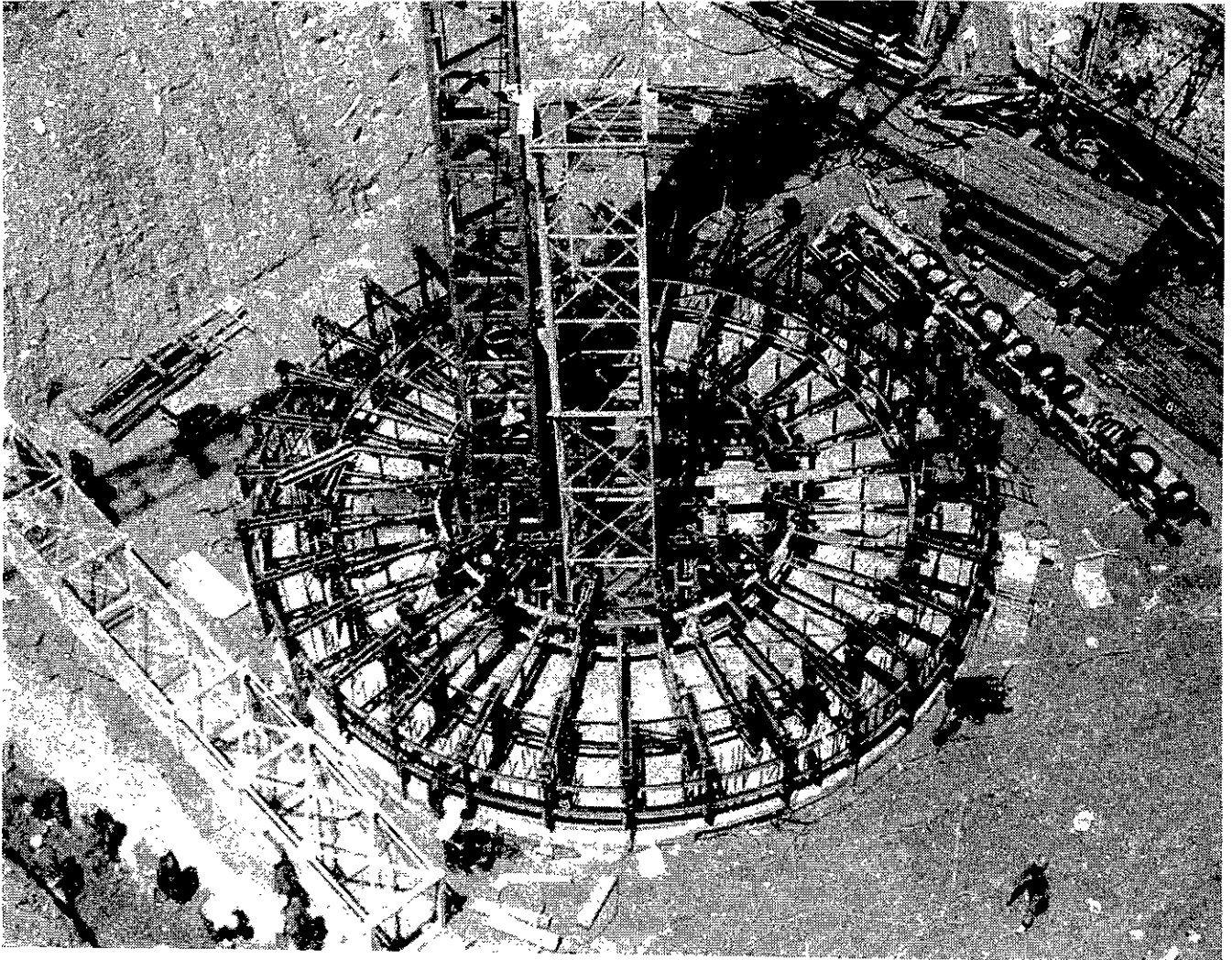
Halfway House, Stellenbosch and Vereeniging, (c) combined post office and automatic telephone exchange buildings at Ermelo, Middelburg (Tvl.), Standerton and Strand, (d) new automatic telephone exchange buildings at Blairgowrie (Johannesburg),



Montclair and Umhlanga Rocks and (e) a mail conveyor belt system between the General Post Office and the new Railway Station in Cape Town.

At the end of the year, a further 29 buildings were in the course of construction at an estimated cost of R7,158,179. They were (a) new post office buildings at Britstown, Butterworth, Florida, Gingindlovu, Gravelotte, Hutchinson, Koffiefontein, Welkom and Welverdiend, (b) the enlargement of the general post office building in Johannesburg and the post office buildings at George, Huguenot,

Klerksdorp, Orlando, Oudtshoorn and Roodepoort and alterations to the general post office building in Port Elizabeth, (c) combined post office and automatic telephone exchange buildings at De Aar, Despatch, Rustenburg, Vryburg and Westonaria, (d) new automatic telephone exchange buildings at Lynnwood Glen (Pretoria), Mossel Bay, Paarl, Uptington and Witbank, (e) the enlargement of the automatic telephone exchange building at Pietermaritzburg and (f) an automatic telephone exchange building and microwave tower in Hillbrow, Johannesburg.



Building operations: Hillbrow Tower, Johannesburg.

By the end of the year, tenders had been accepted for the erection of a new post office building at Zeerust, the enlargement of the automatic telephone exchange building at Bethlehem and the erection of a new automatic telephone exchange building at Milnerton. Construction of these buildings had not yet commenced.

One hundred and twenty-four scheduled minor works and a large number of unscheduled services of

a minor nature, at a total cost of R426,298, were completed. Sixteen of these were undertaken by the Public Works Department.

Sixteen new hired buildings were occupied.

Altogether 28 official residences were provided for members of the staff, whilst a number were under construction and others in the planning stage at the close of the year.

TELECOMMUNICATIONS

Telephone services

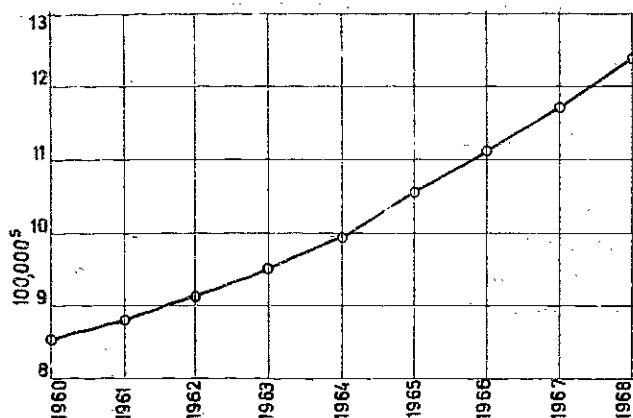
On 31 March 1968, there were 1,239,205 telephones in use or authorised compared with 1,179,811 at the end of the previous financial year, i.e. an increase of 59,394 (5 per cent). The number of sub-

scribers served by means of shared telephone services increased by 4,179 to 29,124.

Altogether 3,127 miles of new wire providing 5,922 applicants with farm telephone line service were constructed or authorised.

The number of farm telephone line services in use or authorised on 31 March 1968, totalled 95,284 representing 210,573 miles of wire. The total expenditure incurred during the year on the provision of farm line telephone services was R1,712,082 compared with R1,178,904 during 1966-1967.

TELEPHONES

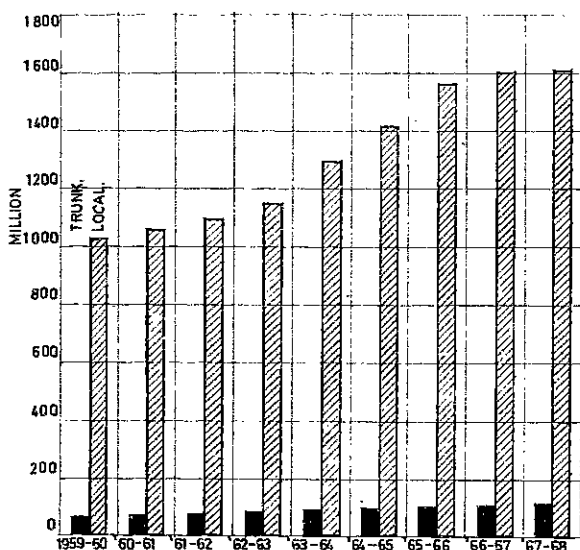


The number of semi-automatic switching units was reduced to 108.

Notwithstanding the provision of 59,394 additional telephone services, there were still 60,049 waiting applicants on 31 March 1968. This is an increase of 12,109 over the total at the end of the previous year. The number of applicants waiting for farm telephone line service was 2,906, a decrease of 747.

During the year some 1,514,000,000 metered telephone call units (excluding calls from call offices) were registered in the cities and towns and almost 92,000,000 on farm lines and multiparty lines.

TELEPHONE CALLS



Telegraph and telephone offices

Public telegraph and telephone facilities were extended to 26 new offices, involving the erection of 178 miles of new line at a cost of R49,469.

Trunk service

The number of trunk calls, including toll calls, handled on a manual switching basis, increased from 108,296,231 to 115,695,551.

To meet the sustained demand for trunk calls and to improve the service generally, an additional 688 trunk circuits were provided. This increased the total number of trunk circuits in the Republic to 15,416. The additional circuits that were provided included circuits for subscribers' direct dialling and also the following long distance trunk circuits:—

Circuit	Additional	Total
Cape Town-Bloemfontein.....	2	13
Cape Town-Durban.....	1	11
Cape Town-Port Elizabeth.....	24	51
Cape Town-Pretoria.....	12	27
Durban-Bloemfontein.....	12	21
Durban-Pretoria.....	11	66
Johannesburg-Bloemfontein.....	4	71
Johannesburg-Cape Town.....	57	95
Johannesburg-Kimberley.....	1	30
Johannesburg-Port Elizabeth.....	25	58
Johannesburg-Windhoek.....	2	9
Bloemfontein-Pretoria.....	11	35

Direct dialling of trunk calls

The facility which enables subscribers at automatic telephone exchanges to dial direct to (a) country manual exchanges and (b) subscribers at other automatic exchanges, was extended as follows:—

A.—(i) From subscribers in the automatic exchange systems of Durban and Amanzimtoti to the following manual exchanges:—

Empangeni
Eshowe
Mandini
Mtubatuba.

(ii) From subscribers at Bloemfontein to the manual exchanges at Theunissen and Wepener.

(iii) From subscribers at Grabouw to the manual exchange at Botrivier.

B.—(i) From subscribers and call offices at Kimberley to subscribers at Port Elizabeth.

(ii) From subscribers at Bloemfontein to subscribers at Port Elizabeth.

(iii) From subscribers in the Klerksdorp automatic exchange system to subscribers at Kroonstad, as well as to the manual exchanges at Edenville and Steynsrus.

(iv) From subscribers in the automatic exchange systems of Durban and Amanzimtoti to subscribers in the Vereeniging and Witwatersrand automatic exchange systems.

(v) From subscribers and call offices at Meyerton to subscribers at Bethlehem, Carletonville, Heidelberg (Tvl.), Kimberley, Klerksdorp, Kroonstad, Parys, Pietersburg, Potchefstroom, Pretoria, Vereeniging, Welkom and the Witwatersrand. Meyerton subscribers are also able to dial direct to 84 manual exchanges.

(vi) From subscribers and call offices at Parys to subscribers at Bethlehem, Carletonville, Heidelberg (Tvl.), Kimberley, Klerksdorp, Kroonstad, Meyerton, Potchefstroom, Pretoria, Vereeniging, Welkom and the Witwatersrand. In addition subscribers at Parys can dial direct to 92 manual exchanges.

(vii) From subscribers and call offices at Pretoria to subscribers at Bloemfontein, Cape Town, Kimberley, Parys and Pietermaritzburg. Direct dialling was extended to a further 76 manual exchanges.

Automatic exchanges

The following additional automatic telephone exchanges were provided in existing automatic exchange areas:—

Isando	1,000 lines (temporary exchange)
--------------	-------------------------------------

Queenswood	2,700 lines
------------------	-------------

Fish Hoek	2,200 lines
-----------------	-------------

The manual exchanges at the following places were replaced by automatic exchanges:—

Chrissiefontein	200 lines
-----------------------	-----------

Daleside	200 lines
----------------	-----------

Halfway House	900 lines
---------------------	-----------

Henley-on-Klip	300 lines
----------------------	-----------

Meyerton	900 lines
----------------	-----------

Parys	2,200 lines
-------------	-------------

Rothdene	300 lines
----------------	-----------

Umhlanga Rocks	800 lines
----------------------	-----------

Plans were in hand to replace the following manual exchanges by automatic exchanges during 1968-69:—

Allanridge	1,100 lines
------------------	-------------

George	2,700 lines
--------------	-------------

Grahamstown	4,000 lines
-------------------	-------------

Lochvaal	800 lines
----------------	-----------

Leeudoringstad	600 lines
----------------------	-----------

The capacity of the following existing automatic exchanges was increased by the number of lines indicated:—

Alberton	800 lines
----------------	-----------

Belville	3,000 lines
----------------	-------------

Bramley	400 lines
---------------	-----------

Durban North	700 lines
--------------------	-----------

Edenvale	700 lines
----------------	-----------

Johannesburg City	2,000 lines
-------------------------	-------------

Kimberley	400 lines
-----------------	-----------

Kloof (Durban)	200 lines
----------------------	-----------

Linden	200 lines
--------------	-----------

Mondeor	200 lines
---------------	-----------

Pietermaritzburg	400 lines
------------------------	-----------

Rosebank	600 lines
----------------	-----------

Sunnyside	2,800 lines
-----------------	-------------

Vasco	600 lines
-------------	-----------

Waterkloof	400 lines
------------------	-----------

Westville (Durban)	400 lines
--------------------------	-----------

Woodstock	300 lines
-----------------	-----------

Wynberg	200 lines
---------------	-----------

Extensions to several other automatic exchanges were planned for the 1968-69 financial year. This would increase the total capacity of the automatic system by 16,400 lines. New automatic telephone exchanges were also expected to be established at Erasmia (1,400 lines), Johannesburg Central "28" unit (3,200 lines), Montclair (2,200 lines), Randburg (4,600 lines) and Robertsham (4,100 lines). In addition, it was expected that the temporary automatic exchange at Wadeville would be replaced by a permanent exchange (4,200 lines), while the existing

manual exchange and automatic exchange at East London would be replaced by a new automatic exchange (8,600 lines).

Manual exchanges

The capacities of 153 manual telephone exchanges were increased either by the installation of additional switchboards or by the provision of additional lines on existing switchboards. Altogether 193 new switchboards were installed. The following were the more important works:—

<i>Exchange</i>	<i>Additional number of subscribers lines provided</i>
Aliwal North	200
Brackenfell	220
Brits	200
Despatch	200
Empangeni	300
Kuruman	200
Nelspruit	600
Port Shepstone	300
Scottburgh	200
Upington	200
Vanderkloofdam	200
Vryburg	220
Warmbad T.	200
Zeerust	200

Radio-telephone service

New radio-telephone service was provided to:—

Cayman Islands
Guyana
Jamaica
Liberia
Leeward Islands
Seychelles
St. Helena
Tortola
Trinidad
Turks Islands
Windward Islands.

Altogether 89,848 radio-telephone calls were made of which 42,336 were incoming and 47,512 outgoing calls. In addition, 8,330 radio-telephone calls were made to and from ships at sea, of which 5,016 were incoming and 3,314 outgoing calls.

Telegraph traffic and transmission

The number of forwarded telegrams handled was 12,812,204. This was 236,983 more than that of the previous year. The total included 1,041,812 telegrams to overseas destinations (including ships at sea), which was 115,921 more than the total for 1966-67. The total number of radio telegrams transmitted between South African coastal radio stations and ships at sea was 39,605—an increase of 21,526 which can mainly be attributed to the closing of the Suez Canal.

A semi-automatic, torn-tape relay system was introduced in Johannesburg during November 1967 for the transmission and reception of telegraph traffic between South Africa and foreign countries. Five major offices in the Republic, which serve as area transmitting offices for foreign telegrams to and from the whole of the Republic and South West Africa, have direct access to the system.

Telegrams are received in Johannesburg in the form of perforated tapes, which are merely transferred to the appropriate automatic transmitters.

The system eliminates the need to reprepare traffic in Johannesburg which in turn reduces transmission times and the incidence of errors arising from the human element.

Communication systems

During the year 20 additional voice frequency carrier telegraph systems were provided, namely:—

- Cape Town-Port Elizabeth
- Cape Town-Wolseley-Ceres
- Durban-Darnall
- Johannesburg-Standerton
- Johannesburg-Delareyville
- Johannesburg-Pretoria
- Johannesburg-Nelspruit
- Johannesburg-Cape Town (2)
- Johannesburg-Schweizer-Reneke
- Johannesburg-Port Elizabeth
- Johannesburg-Windhoek
- Kimberley-De Aar
- Kimberley-Postmasburg
- Kimberley-Douglas
- Kimberley-Hartswater
- Pretoria-Jamestown
- Pretoria-Potgietersrus
- Pretoria-Louis Trichardt
- Venterstad-Colesberg

Teleprinters

The number of teleprinters in use departmentally at the close of the year was 1,280 and the number of country offices equipped for teleprinter working 322.

Leased teleprinter circuits

Twenty-eight additional leased teleprinter circuits were provided, bringing the total number of such circuits to 406.

Four additional radio-teleprinter circuits were provided between lessees in the Republic and overseas countries. At the end of the year, there were 32 to Great Britain, three to the United States of America, one to West Germany, four to France, one to Ascension, one to Kenya, three to Switzerland and one to Kinshasa.

Photo-telegram services

Public photo-telegram facilities were provided at East London on 6 March 1968. The telegraph offices at Bloemfontein, Cape Town, Durban, East London, Johannesburg, Port Elizabeth and Pretoria are now equipped for the transmission and reception of photo-telegrams.

Photo-telegrams to and from foreign countries came to 523 and 997, respectively. A total number of 7,142 photo-telegrams was transmitted over the internal system.

Direct radio-telegraph services

New direct radio-telegraph services were introduced between Johannesburg and Rome, and between Johannesburg and a second telegraph company in the United States of America. Direct radio-telegraph services are now available to the following countries:—

Angola, Australia, France, Great Britain, Italy, Japan, Kenya, Madagascar, Republic of the Congo (Kinshasa), Switzerland, the United States of America and West Germany.

Submarine cable systems

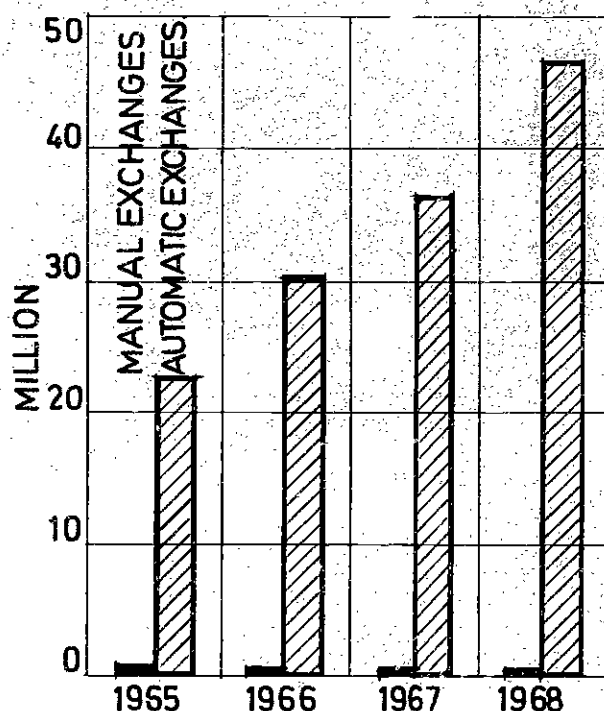
On 1 June 1967, South Africa abandoned the West Coast cable systems of the Commonwealth between Cape Town and St. Helena. The traffic formerly handled over these single telegraph channel cables is now routed via radio-telegraph circuits.

Telex service

Automatic telex exchanges were brought into use at Bloemfontein and Port Elizabeth on 23 March 1968.

The number of subscribers in the Republic rose by 402 to 3,703, but there were 404 waiting applicants at the end of March 1968. Some 46,518,000 unit calls were registered which is 9,935,000 more than that of the previous year. Subscribers connected to manual exchanges made 432,047 calls.

TELEX CALLS



The international telex switchboard in Pretoria now enables telex subscribers in the Republic to communicate with telex subscribers in more than 85 countries.

The number of overseas telex calls increased by 29.28 per cent and the number of paid minutes by 23.72 per cent over the previous year.

Registered telegraphic addresses

At the end of the year the total number of telegraphic addresses registered in the Republic was 24,774 compared with 24,107 the previous year.

Data services

Twenty data circuits comprising 1,109 circuit miles existed at the end of the year, compared with five at the end of the previous year.

A firm order for a comprehensive data network covering the Republic and South West Africa was received and is to be implemented over a three-year period.

The service proved to be efficient and further applications for new services and for the extension of existing services are expected.

Certificates and licences

The number of valid certificates and licences as at 31 March 1968, was as follows:

Radio Engineers	91
Radio Technicians	573
Radio Repairers	1,652
Aircraft Radio Stations	768
Ship Radio Stations	710
Amateur Stations	2,546
Private Radio Communication	9,086
Radio Burglar Alarms	3,196

ORGANISATION AND METHODS

Electronic data processing

After an intensive study over a number of years, it was decided to make use of electronic computers to process a vast volume of work. Tenders for the

provision of suitable equipment were invited and the project elicited keen interest from computer firms. A committee was appointed to consider the tenders and to advise the Department.



A contract for the supply of a computer is signed by the Postmaster General, Mr M. C. Strauss. Looking on are Mr J. Z. Venter (Deputy Postmaster General) and Messrs W. H. Weaving and S. A. James [English Electric Computers S.A. (Pty) Ltd] and J. S. G. Janse van Rensburg (Chief Work Study Officer of the Post Office).

A commencement was made with the re-organisation involved and with the development of procedures and systems to fall in line with computer working. It is proposed to proceed with the implementation in the Transvaal and the following activities will be concerned:—

Telephone and telegraph systems: Accounting procedures and maintenance of essential records in respect of telephone and telegraph services.

Stores: Accounting and control of purchases and issues.

Expenditure control: Control of all expenditure by the Department.

Salary processing and maintenance of staff records. Accounting of Postal Orders, Money Orders and C.O.D. moneys.

Once the aforementioned projects are functioning satisfactorily, computerisation will be extended to other work spheres and divisions. In conjunction herewith and in order to overcome the problem of decentralised activities, extensive and country-wide use will later be made of the telephone and telegraph network for the transmission of data in connection with the relative services.

Incentive bonus schemes

Incentive bonus schemes have now been extended

to three of the Department's typing sections, the Johannesburg telegraph office and the postal delivery service. In addition, the feasibility of introducing incentive bonus schemes in the Engineering Division is being investigated.

Routine and special investigations

A number of work study and establishment investigations were carried out which included the administrative and clerical organisation of the Engineering Division.

POST OFFICE TERMINOLOGY COMMITTEE

The printing of the revised Post Office Dictionary was progressing satisfactorily. It was expected that the new edition would be available during the first half of 1969.

The list of foreign place names has been augmented and revised in accordance with the latest available information. The monetary units of the

world have been included in the new edition, together with a comprehensive section of generally used expressions.

The Committee continued to co-operate with the compilers of "Die Woordboek van die Afrikaanse Taal" by supplying a number of definitions of technical terms.

MOTOR TRANSPORT

In order to meet increased transport requirements, it was necessary to purchase 267 additional vehicles. At the end of the year the fleet consisted of 4,297 vehicles. It was also necessary to replace 380 vehicles which were no longer serviceable. The total cost of the additional and replacement vehicles amounted to R897,041 compared with R702,058 during the previous financial year.

Altogether 359 unserviceable vehicles were sold by public auction at various centres and the amount realised was R69,774. During the previous financial year 291 unserviceable vehicles were sold for an amount of R51,341.

The fleet of vehicles covered 35,132,049 miles. Maintenance and running costs amounted to R1,858,143. During the previous year the mileage covered was 32,197,318, while the running and maintenance costs amounted to R1,562,798. The

total transport costs for the year, including depreciation, amounted to R2,959,247 compared with R2,597,200 for the previous year.

Departmental vehicles were involved in 1,057 accidents. Many of the accidents were of a minor nature resulting in very little financial loss. The average number of miles per accident was 33,238 compared with 30,091 the previous year. An amount of R61,448 was paid for accident claims against the Department and R5,073 recovered from other parties.

The Department continued to co-operate with the South African Road Safety Council and strongly supported its efforts to reduce the incidence of road accidents. Departmental drivers were encouraged to participate in the safe-driving scheme and the number of entrants increased from 2,872 during the previous year to 3,685. Despite the risk of accidents to which departmental drivers are continuously exposed, particularly in the large cities, many of them received certificates for safe driving over lengthy periods.

PUBLIC RELATIONS

The Publicity Branch, in collaboration with the Engineering Division, arranged engineering exhibits at the Cape Show, Cape Town, from 29 February to 9 March 1968 and at the East Rand Career Week, Benoni, from 25 to 28 March 1968. These exhibits were very successful and elicited much interest from a large number of visitors.

The Department took part in the following national and international philatelic exhibitions and received commendations and/or awards from the organisers:—

(i) Marina di Massa, Italy—July/October 1967.

(ii) National Philatelic Exhibition and Annual Congress of the Philatelic Federation of Southern Africa Bloemfontein—October 1967.

(iii) Wichita Stamp Club Exhibition, Kansas, U.S.A.—October 1967.

(iv) Arctic Institute of North America, Washington—December 1967.

Official first-day covers were issued in conjunction with the commemorative stamps on 31 October 1967, to mark the 450th anniversary of the Church Reformation. More than 40,000 were sold and serviced by the Philatelic Bureau. A specially designed datestamp was provided to postmark these first-day envelopes. Specially designed datestamps were also provided for use at the National Philatelic Exhibition and Annual Congress in Bloemfontein and the temporary postal facilities which were available at the Industrial Exhibition at Verreeniging. A postal agency with a specially designed datestamp was provided on the Show Train.



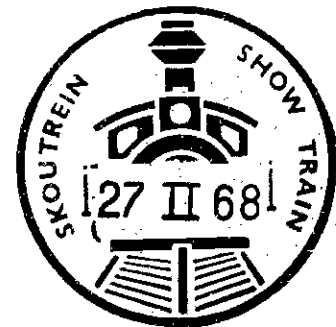
AMPTELIKE GEDENKKOEVERT
OFFICIAL COMMEMORATIVE ENVELOPE 6



AAN/TO:

DIE FILATELIEBURO / THE PHILATELIC BUREAU

PRETORIA



ENGINEERING DIVISION

General

Plant to the value of R29,973,011 was added during the year 1967-68, bringing the total value to over R377,256,000. The plant was maintained at a cost of R21,874,000.

Telephone subscriber's equipment

The number of private automatic branch exchanges (PABX) was increased by 345. This resulted in the connection of 13,116 additional extensions—an increase of 18%.

A new series of manually operated private branch exchanges was introduced. These private branch exchanges are cordless and smaller in size.

Switching equipment

New automatic exchange equipment to the value of R9 million was installed. Altogether 149 permanent automatic exchanges were in service at the end of the year.

Ninety major manual exchanges were extended by a total capacity of 14,800 subscriber's lines, while a number of minor exchanges were extended by 3,350 circuits at a combined cost of R281,118.

A large proportion of the total switching plant purchased was produced by local manufacturers and equipment to the value of R12.7 million was inspected for quality during the year.

Switching equipment (trunk portion)

Further progress was made with the extension of the national subscriber trunk dialling (NSTD) network. In addition to the opening of the NSTD installations at Meyerton and Parys and the completion of the Potchefstroom NSTD exchange, the most significant advance was the placing into service of the giant NSTD exchange at Pretoria at a cost of nearly R2 million. This exchange occupies some 8,000 square feet of floor space spread over two floors and enables Pretoria subscribers to dial direct to nearly all the major centres in the Republic. The Pretoria trunk exchange has also been equipped with the most modern manual switchboards of the cordless type. The switchboards resemble low office desks rather than the traditional upright manual switchboards and all connections are made by push-buttons.



Pretoria manual switchroom.

Exchange cables

An amount of R3·5 million was spent on exchange cables to bring the total investment in this type of plant to R63·8 million.

New techniques were devised and materials tested preparatory to the change from the lead sheathed to aluminiumpolythene laminate sheathed cables.

Microwave network

Steady progress was made with the expansion of the microwave network and the Bloemfontein-Port Elizabeth system was placed in service in July 1967. Two other systems, Port Elizabeth-Cape Town and Cape Town-Melkbosstrand, were virtually completed.

Road and building contracts for repeater stations at Nylstroom and Potgietersrus for the Johannesburg-Pretoria-Pietersburg route were awarded and a temporary site at Pretoria established until a permanent tower can be erected in a few years time. This system will augment the existing cables between Johannesburg and Pretoria and the trunk route to the north of Pretoria. The latter route is the most heavily exploited open wire route in the world, providing as it does, 400 trunk circuits.

The propagation survey for the Bloemfontein-Kimberley system, which will provide Kimberley with additional outlets, and which is the first leg of an alternate route to Cape Town, was completed.

The trunk requirements of the rapidly expanding Transvaal lowveld exceed the capacity of the open wire routes serving the area through Nelspruit. The propagation survey for a route from Johannesburg to Nelspruit has been completed. It will be installed as soon as possible.

A preliminary survey for a system from Kimberley to Cape Town was carried out and a detailed survey will be undertaken next year. When completed it will provide additional trunks and an alternate route to the north from Cape Town.

Telegraphs

The total investment in telegraph equipment increased to R15·3 million.

The automatic telex exchanges which were opened at Port Elizabeth and Bloemfontein, brought the proportion of telex subscribers who enjoy automatic service up to 93%.

The number of radio-telegraph circuits to overseas countries was increased to 40 telex, 15 public message and the equivalent of 19 full-speed private or leased circuits.

External and marine radio services

An amount of R176,000 was spent on expanding and improving the radio services.

A very high frequency (VHF) radio-telephone service operating in the international V.H.F. maritime mobile band was introduced at Durban and similar services will be introduced at Port Elizabeth and Cape Town in the near future.

Expenditure on external services was considerably lower than in previous years, as the future role of radio services will mainly be standby facilities for the submarine telephone cable.

Workshops

Amongst the items of equipment overhauled in the workshops were—

251,000 telephones
237,000 dials
4,960 switchboards
4,420 coin boxes
596 teleprinters.

Items to the value of R190,000 were manufactured. These items were not readily or economically available from commercial sources.

The erection of prefabricated buildings, the installation of air-conditioning plants and other minor buildings work to the value of R198,000 was carried out by the workshops staff. Maintenance work to air-conditioning plants and buildings was undertaken at a cost of R46,000.

The workshops continued with motor transport inspections and the maintenance of all standby power plants and mechanical aids. Included amongst the latter are 120 mobile compressors, 100 caravans, 340 pole and cable trailers, 36 tractors and 11 mobile cranes.

Laboratory

During the year 281 investigations which involved all aspects of telecommunications practice were carried out.

The Protea telephone, which is manufactured in South Africa, was taken into general service. The research and development of this telephone was undertaken in the laboratory during the preceding six years. It is at present available in six different colours. A special telephone which has the same electrical characteristics as the Protea telephone was developed for use in bathrooms of luxury hotels.

As the Protea telephone is unique, no suitable electro-acoustic measuring apparatus was available anywhere in the world and the necessary apparatus was therefore designed and built in the laboratory.

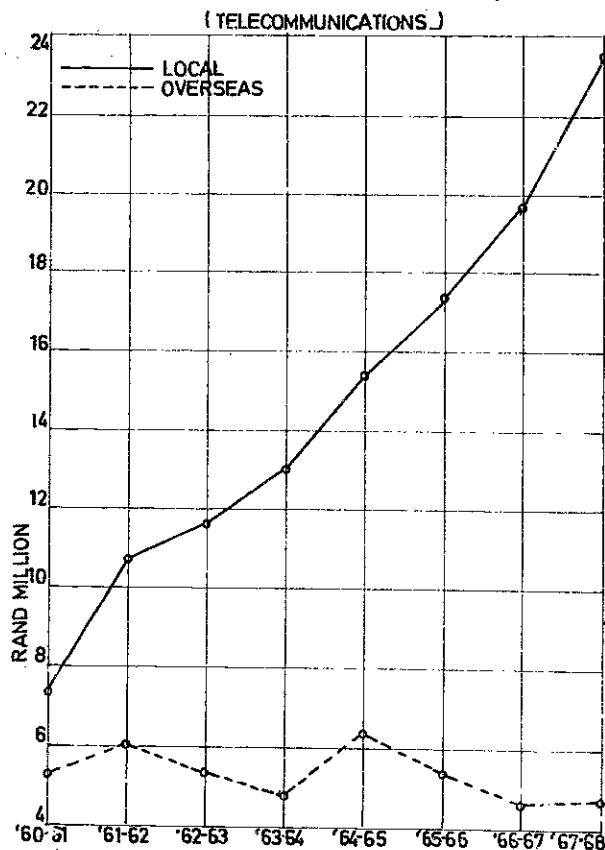
STORES DIVISION

Uniforms

Inspectors of Uniformed Staff are now issued with blue-grey instead of navy-blue uniforms. These uniforms, which are peculiar to the Post Office, are cooler and exceptionally neat. The issue of optional

summer uniforms to postmen has also been extended to Inspector grades, whilst Bantu workmen will shortly be issued with shirts instead of tunics for summer wear. The new uniforms are popular with the staff.

STORES PURCHASES



Stamps, Postal Orders, etc.

Stocks valued at a record amount of R159,000,000 were distributed to nearly 1,700 post offices. As in previous years, the bulk of the stock was obtained from the Government Printing Works.

Re-organisation and planning

Future planning provides for the distribution of printed forms, stationery, etc., to all post offices in the Republic from the new stores depot which is being provided at Koedoespoort near Pretoria. Implementation of this scheme will result in considerable savings in railage, as most of these stocks are obtained from the Government Printing Works in Pretoria.

When the Koedoespoort depot is completed, the accommodation now used for storing printed forms, stationery, etc., will be utilized to implement the scheme whereby engineering stores will be centralised at Johannesburg. Progress in this direction has been made to the extent that items such as tools and radio and carrier spares have already been centralised at Johannesburg. Cable will henceforth be stored at Johannesburg and Port Elizabeth only.

At Port Elizabeth an existing building is being renovated to serve as a stores depot. This will enable the Post Office to release the accommodation at present in use and which is urgently required by another State Department.

STATISTICAL TABLES

POST OFFICE SAVINGS BANK

Item	1965-66	1966-67	1967-68
1. Savings Bank offices.....	1,628	1,625	1,640
2. Ordinary accounts:—			
(a) Opened.....	146,612	139,903	165,154
(b) Closed.....	174,739	192,156	199,743
(c) Remaining open.....	1,762,912	1,710,659	1,676,070
(d) Deposits:—			
Number.....	1,814,850	1,788,916	1,845,470
Value, including interest..... R	56,347,110	64,000,942	72,482,506
(e) Withdrawals:—			
Ordinary:—			
Number.....	365,143	363,595	387,451
Amount..... R	41,347,970	43,996,529	52,433,667
On demand:—			
Number.....	1,518,843	1,447,345	1,379,718
Amount..... R	15,117,273	14,846,215	13,771,268
Total:—			
Number.....	1,883,986	1,810,940	1,767,169
Amount..... R	56,465,243	58,842,744	66,204,935
(f) Balance due to depositors:—			
Amount..... R	129,386,031	134,544,229	140,821,800
Average, per depositor..... R	73.39	78.65	84.02
3. Savings Bank Certificates:—			
(a) Investments..... R	659,800	2,644,400	4,814,800
(b) Repayments, exclusive of interest..... R	1,224,800	974,400	1,563,400
(c) Balance of investments..... R	6,332,400	8,002,400	11,253,800
4. Accounts transferred:—			
To other Administrations:—			
Number.....	585	11,256	2,139
Amount..... R	48,329	980,118	132,327
From other Administrations:—			
Number.....	105	101	69
Amount..... R	5,971	7,695	3,512
5. School Banks:—			
Number of accounts.....	2	1	1
Balance due to depositors..... R	178	1	1

Item 2 (f) does not include item 3 (c).

UNION LOAN AND NATIONAL SAVINGS CERTIFICATES*

Item	1965-66	1966-67	1967-68
	R	R	R
1. Investments.....	17,972,387	16,775,245	15,973,192
2. Repayments, exclusive of interest.....	16,113,149	14,962,078	23,085,094
3. Balance of investments.....	106,672,857	108,486,024	101,374,122

* Name changed to "National Savings Certificates" as from 1/9/61.

WORK PERFORMED ON BEHALF OF OTHER DEPARTMENTS OF STATE

Item	1965-66	1966-67	1967-68
1. Free postage:—			
Value..... R	3,095,451	3,095,451	3,095,451
2. Free money orders:—			
Number.....	108,472	128,315	152,093
Value..... R	3,760,100	4,380,393	4,677,802
3. Pension warrants cashed:—			
Number.....	3,279,953	3,454,217	3,534,795
Value..... R	87,572,560	99,079,721	100,485,405
4. Revenue collected:—			
(a) Licences..... R	266	250	438
(b) Revenue stamps..... R	3,449,424	3,522,005	3,695,197
(c) Cape Entertainment tax..... R	251,151	235,467	194,835
(d) Customs dues..... R	4,418,733	4,432,997	4,952,854
(e) Fumigation fees..... R	1	—	—
5. Cigarette duty..... R	50,064,298	54,987,413	67,142,883
6. Levy Savings Certificates (redeemed)..... R	2,020	851	658
7. Ex-volunteers: Loan repayments..... R	154	133	126
8. Department of Community Development: Rentals and loan redemptions collected R	2,806,402	3,290,529	3,693,093
9. Loan Levy Certificates (redeemed)..... R	570,977	130,887	53,694
10. Treasury Bonds (collection of subscriptions)..... R	10,705,120	4,787,600	46,256,500
11. First Series Savings Bonds (collection of subscriptions)..... R	—	16,363,150	6,859,700

MONEY ORDERS AND POSTAL ORDERS

Item	1965-66	1966-67	1967-68
1. Money orders <i>Issued</i> :—			
(a) On offices in South Africa:—			
Number.....	1,131,333	1,161,168	1,225,121
Amount..... R	29,145,771	31,431,915	33,231,086
(b) On other countries:—			
Number.....	70,805	75,177	113,784
Amount..... R	1,538,159	1,706,830	2,144,011
(c) Total:—			
Number.....	1,202,138	1,236,345	1,338,905
Amount..... R	30,683,890	33,138,745	35,375,097
(d) Commission..... R	240,604	253,550	271,131
2. Money orders <i>Paid</i> :—			
(a) Issued in South Africa:—			
Number.....	1,132,087	1,174,608	1,253,325
Amount..... R	29,349,738	31,758,148	33,911,746
(b) Issued in other countries:—			
Number.....	92,477	71,711	72,983
Amount..... R	2,003,258	1,898,368	2,018,547
(c) Total:—			
Number.....	1,224,564	1,246,319	1,326,308
Amount..... R	31,352,996	33,656,516	35,930,293
3. Postal orders <i>Issued</i> :—			
(a) Number:—			
South African.....	10,412,739	10,926,455	10,956,999
British.....	1,316,249	1,357,792	756,557
Total.....	11,728,988	12,284,247	11,713,556
(b) Amount:—			
South African..... R	28,079,658	30,749,355	33,069,286
British..... R	2,285,040	2,369,913	1,312,501
Total..... R	30,364,598	33,119,268	34,381,787
(c) Commission:—			
South African..... R	372,261	396,967	412,208
British..... R	64,590	65,913	37,727
Total..... R	436,851	462,880	449,935
4. Postal orders <i>Paid</i> :—			
(a) Number:—			
South African.....	10,310,294	10,819,907	10,826,801
British.....	654,712	514,790	371,962
Total.....	10,965,006	11,334,697	11,198,763
(b) Amount:—			
South African..... R	27,952,162	30,643,743	33,337,592
British..... R	2,533,576	1,960,816	1,390,366
Total..... R	30,485,738	32,604,559	34,727,958

STAFF

Item	1965-66	1966-67	1967-68
1. Permanent staff establishment:—			
(a) Authorised posts.....	39,260	40,347	41,145
(b) Officials employed.....	37,612	38,657	39,315
2. Total number of persons employed.....	48,690	49,812	51,140
3. Suggestions submitted by the staff:—			
(a) Total number.....	21	27	117
(b) Number adopted.....	3	5	9
(c) Number of awards.....	2	3	6
(d) Total awards paid.....	R15.00	R29.00	R15.00

Item 1 does not include Engineering personnel paid from Capital Vote Funds, temporary and casual employees engaged in addition to the authorised establishment and postal agents.

Item 2 includes the three classes of employees excluded from Item 1.

EXAMINATIONS ENTERED FOR BY THE STAFF

Examining Body and Examination	CENTRES			ENTRIES			SUCCESSSES		
	1965-66	1966-67	1967-68	1965-66	1966-67	1967-68	1965-66	1966-67	1967-68
DEPARTMENT OF POSTS AND TELEGRAPHS:—									
Final Examinations for Administrative Assistants and Woman Assistants	303	293	256	1,258	1,577	1,202	1,018	1,407	1,059
DEPARTMENT OF EDUCATION ARTS AND SCIENCE:—									
Examination for Appointment as Engineer.....	—	—	—	13	12	8	4	2	1
Diploma in Public Administration.....	1	—	—	77	—	—	56	—	—
First Year Course.....	—	2	2	—	41	39	—	19	20
Second Year Course.....	—	2	2	—	44	39	—	27	20
Third Year Course.....	—	2	2	—	41	26	—	—	28
Diploma in Accounting and Auditing.....	i	—	—	2	—	—	2	—	—
First Year Course.....	—	1	1	—	4	5	—	—	3
Second Year Course.....	—	1	1	—	1	3	—	1	2
Third Year Course.....	—	1	1	—	1	2	—	—	1
Diploma in Cost Accounting:—	—	—	—	—	—	—	—	—	—
First Year Course.....	—	—	1	—	—	2	—	—	1
Second Year Course.....	—	—	1	—	—	1	—	—	—
Third Year Course.....	—	—	—	—	—	—	—	—	—
National Certificate for Technicians (Telecommunications):—	—	—	—	—	—	—	—	—	—
First Year Course.....	—	—	—	104	165	168	78	91	140
Second Year Course.....	—	—	—	113	216	257	77	137	229
Third Year Course.....	—	—	—	130	135	152	102	123	147
National Diploma for Technicians (Telecommunications):—	—	—	—	—	—	—	—	—	—
First Year Course.....	—	—	—	87	71	55	50	53	49
Second Year Course.....	—	—	—	38	24	21	16	11	20
Third Year Course.....	—	—	—	14	28	17	13	27	17
Fourth Year Course.....	—	—	—	16	18	11	6	9	9

ITEMS OF MAIL HANDLED AT POST OFFICES IN SOUTH AFRICA

Class of Mail	Posted in South Africa for delivery in South Africa		Posted in South Africa for delivery in other countries		Received from other countries for delivery in South Africa		Received from other countries in transit through South Africa		Totals of items handled	
	1966-67	1967-68	1966-67	1967-68	1966-67	1967-68	1966-67	1967-68	1966-67	1967-68
1. Letters.....	489,395,608	543,249,148	43,693,052	53,391,052	81,428,776	62,711,532	1,875,848	1,670,240	616,393,284	661,021,972
2. Postcards (single and reply).....	19,746,896	18,251,064	4,301,024†	4,084,028	2,579,980†	3,607,118	192,348	96,356	26,820,238†	26,038,566
3. Newspapers.....	55,403,244‡	54,630,420	4,463,628	3,397,524	7,061,080	8,831,628	498,888	389,636	67,426,840	67,249,208
4. Printed matter, commercial papers and sample packets.....	383,012,240	391,948,284	9,834,292	20,761,052	20,066,592	30,096,768	673,608	735,644	413,586,732	443,541,748
5. Householder circulars.....	6,815,568	6,119,028	—	—	—	—	—	—	6,815,568	6,119,028
6. Express items.....	1,379,248	1,822,860	124,592	222,508	106,340	180,284	2,340	11,076	1,612,520	2,236,728
7. Registered items.....	23,140,728	23,859,732	1,468,584	1,749,696	1,335,880	1,832,272	99,840	54,496	26,045,032	27,496,196
8. Certified items.....	4,134,876	4,333,464	—	—	—	—	—	—	4,134,876	4,333,464
9. Parcels (including C.O.D. and I.P.):—										
(a) Ordinary.....	15,187,536	15,687,612	1,125,852	1,264,296	2,005,860	2,121,372	113,352	71,412	18,432,600	19,144,692
(b) Agricultural.....	916,464	858,660	—	—	16,128	52,560	—	—	916,464	858,660
(c) Small packets.....*	—	—	28,692	72,264	—	—	—	—	44,820	124,824
TOTALS.....	999,132,408	1,060,760,272	65,039,716	84,942,420	114,600,636	109,433,534	3,456,224	3,028,860	1,182,228,984	1,258,165,086
	1962-63	1965-66	1962-63	1965-66	1962-63	1965-66	1962-63	1965-66	1962-63	1965-66
10. Taxed letters.....	1,456,520	1,937,260	446,472	599,092	492,960	87,672	20,852	19,292	2,416,804	2,643,316
11. Literature for the blind.....	75,712	85,800	624	156	1,664	1,508	208	520	78,208	87,984
12. Official correspondence:—										
(a) Letters, ordinary.....	47,918,572	108,606,680	220,584	1,298,076	311,012	245,908	93,664	191,724	48,543,832	110,342,388
(b) Registered items.....	5,323,604	3,962,816	24,440	80,184	40,820	38,480	30,316	22,828	5,419,180	4,104,308
(c) Certified items.....†	—	3,828,864	—	57,772	—	3,432	—	9,100	—	3,899,168
(d) Other items (including post-cards, accounts, printed papers, parcels, etc.).....	18,704,712	21,028,748	180,908	682,344	104,156	69,056	13,884	60,216	19,003,660	21,840,364
13. Specially prepaid air-mail items:—										
(a) Letters.....	28,619,968	49,729,628	16,050,476	24,616,072	16,485,560	26,796,068	655,512	869,336	61,811,516	102,011,104
(b) Postcards.....	558,272	1,322,360	950,976	2,094,144	3,603,912	2,257,216	46,696	87,672	5,159,856	5,761,392
(c) Air letters.....	1,433,744	2,204,332	10,467,600	10,467,600	5,215,392	7,078,864	245,492	250,900	13,913,120	20,001,696
(d) Air parcels.....	78,728	145,236	20,124	63,752	84,500	193,648	520	3,900	183,872	406,536
(e) Second class air-mail items	53,300	50,492	856,128	1,317,368	1,256,372	1,813,158	74,880	64,584	2,240,680	3,245,902

Notes—

Items 10 to 13 are counted separately every three years but are included in the annual counts under items 1 to 9.

* Previously counted as ordinary parcels.

† Service restricted to Government Departments and Provincial Administrations.

‡ Amended figure.

POSTAL

Item	1965-66	1966-67	1967-68
1. Post Offices:—			
(a) Money order offices.....	1,616	1,624	1,652
(b) Postal agencies.....	1,515	1,485	1,434
(c) Total number of offices.....	3,131	3,109	3,086
2. Private post bags.....	12,694	12,790	12,943
3. Private boxes.....	145,103	151,740	159,448
4. Posting boxes other than those on Post Office premises.....	5,402	5,581	5,580
5. Parcel services:—			
(a) Cash on delivery:—			
Number of parcels.....	1,537,820	1,549,447	1,668,253
Trade charges collected.....R	7,870,517	8,407,528	9,475,404
Revenue to Post Office.....R	311,866	317,199	343,165
(b) Insured:—			
Number of parcels.....	2,850,560	3,221,141	3,203,733
Revenue to Post Office.....R	172,802	187,169	200,407
Compensation paid.....R	8,173	6,333	6,802
(c) Acknowledgment of posting:—			
Number of parcels.....	3,104,072	2,662,294	3,729,751
Revenue to Post Office.....R	31,041	26,623	37,291
Compensation paid.....R	3,962	4,659	4,500
6. Total articles handled.....	SEE	PREVIOUS	PAGE
7. Undelivered articles:—			
(a) Number.....	10,118,134	11,501,698	11,518,156
(b) Value of contents:—			
Currency.....R	57,089	76,765	61,937
Other items.....R	2,457,950	3,048,437	2,660,913
(c) Revenue from sales.....R	1,730	1,633	1,928
8. Postage franking machines licensed.....	6,147	6,666	7,141
9. Business reply service licences.....	3,596	3,811	2,790
10. Overseas mails:—			
Received through Great Britain for South Africa:—			
Mail bags.....	259,001	248,623	242,940
Parcel bags.....	139,324	123,113	122,958
Despatched from South Africa through Great Britain:—			
Mail bags.....	45,246	45,346	65,610
Parcel bags.....	26,295	24,505	37,339
Received for South Africa other than through Great Britain:—			
Mail bags.....	64,051	97,977	108,913
Parcel bags.....	82,169	108,767	120,801
Despatched from South Africa other than through Great Britain:—			
Mail bags.....	17,404	23,432	26,986
Parcel bags.....	7,325	9,092	10,908

Item 7 (a), (b) and (c) are in respect of items which, on account of incorrect or insufficient addresses, could not be delivered to addressees, and which were handled in the Returned Letter Office, Cape Town. The value indicated against item 7 (b) is also in respect of items which were returned to the senders by the Returned Letter Office, whilst item 7(c) only refers to items which could neither be delivered to the addressees nor returned to the senders.

Item 10: Includes mails in closed bags in transit through South Africa to or from South West Africa, Botswana, Rhodesia, Swaziland, Zambia, Malawi, Mozambique and Mauritius.

COST OF CONVEYANCE OF MAILS WITHIN SOUTH AFRICA

Item	1965-66	1966-67	1967-68
	R	R	R
1. By rail (South African Railways).....	2,908,000	3,639,000	3,309,443
2. By road (S.A.R. Road Motor Services).....			
3. By road (private services).....			
4. By air.....	401,862	472,629	495,356
5. Total.....	818,368	869,308	942,497
	4,128,230	4,980,954	4,747,296

Item 3: Includes postmen's cycle allowances.

WEIGHT OF AIR-MAIL TRAFFIC OUTWARD FROM SOUTH AFRICA

Item	1965-66	1966-67	1967-68
	lb.	lb.	lb.
1. South African Airways/Air Rhodesia (to Rhodesia, etc.).....	292,443	284,904	282,704
2. Sabena.....	602	431	130
3. Springbok Service.....	650,288	748,023	828,681
4. Pan American Airways.....	18,922	20,060	16,187
5. D.E.T.A.....	13,242	13,358	13,996
6. South African Airways (to Lourenco Marques).....	15,845	13,511	16,742
7. EL AL Israel National Airlines.....	1,998	2,946	3,195
8. K.L.M. Royal Dutch Airlines.....	1,882	3,366	8,582
9. Qantas Empire Airways.....	10,246	10,289	14,696
10. U.A.T. (French Airlines).....	4,927	3,707	6,349
11. South African Airways (to Australia).....	11,610	14,555	5,932
12. Alitalia.....	744	3,323	24,190
13. Lufthansa.....	9,876	12,146	16,583
14. T.A.P. (Transportes Aéreos Portugueses).....	3,453	6,194	7,682
15. South African Airways (to Botswana).....	—	480	1,105
16. Botswana Airways.....	—	571	1,258
17. South African Airways (to Lesotho).....	—	—	75
18. Lesotho Airways.....	—	—	38
19. Madagascar Airways.....	—	—	498
20. Total weight of mails.....	1,036,078	1,136,964	1,248,623

Item 15 and 16: Service commenced on 1 November 1966.

Items 17 and 18: Services commenced on 26 February 1968.

Items 19: Service commenced on 5 August 1968.

MOTOR TRANSPORT

Item	1965-66	1966-67	1967-68
Number of vehicles in use.....	3,778	4,009	4,297
Miles travelled (millions).....	30.87	32.19	35.13
Total expenditure (thousands of rand).....	2,402	2,597	2,959
Number of accidents.....	1,016	1,070	1,057
Average miles per accident.....	30,389	30,091	33,238

TELEPHONES

Item	1965-66	1966-67	1967-68
1. Exchanges.....	1,771	1,770	1,769
2. Public call offices.....	16,160	16,609	16,988
3. Exchange connections:—			
(a) Business.....	207,808	217,050	225,441
(b) Residence.....	417,688	431,676	445,258
4. Shared services.....	21,509	24,945	29,124
5. Farm lines:—			
(a) Number of lines.....	11,084	11,245	12,469
(b) Farmers connected.....	91,939	93,074	95,284
(c) Length of route, in miles.....	204,091	205,073	210,573
6. Party lines (other than farm lines):—			
(a) Number of lines.....	1,325	1,325	1,393
(b) Parties connected.....	6,840	7,043	7,517
7. Total telephone stations.....	1,119,878	1,179,811	1,259,205

INTERNATIONAL TELEPHONE SERVICES

Item	1965-66	1966-67	1967-68
1. Calls to overseas countries.....	31,638	38,114	46,723
2. Calls from overseas countries.....	26,087	34,982	41,315
3. Calls to Rhodesia, Zambia and Malawi.....	167,105	181,894	209,569
4. Calls from Rhodesia, Zambia and Malawi.....	212,217	265,995	299,070
5. Calls to Lourenco Marques.....	57,578	54,121	59,785
6. Calls from Lourenco Marques.....	58,378	59,152	68,879
7. Calls to Kenya, Uganda and Tanzania.....	523	622	708
8. Calls from Kenya, Uganda and Tanzania.....	630	828	861
9. Calls to Congo Republic.....	170	136	86
10. Calls from Congo Republic.....	341	266	130
11. Calls to ships.....	2,747	2,324	3,314
12. Calls from ships.....	4,003	2,653	5,016

TELEPHONE BUSINESS AND REVENUE FIGURES IN THE LARGEST URBAN EXCHANGE SYSTEMS

Exchange System	Year ended 31st March	Number of Telephone Stations	Number of Accounts rendered	Number of Insolvencies	Total Revenue Collections*	Total Revenue written off as irrecoverable	Amount (in cents) written off per R100 of Revenue collected
					R	R	
Witwatersrand.....	1966	346,911	2,686,200	90	22,534,742	20,551	9.12
	1967	365,195	2,770,080	66	25,048,361	21,492	8.58
	1968	383,761	2,836,560	62	31,084,274	21,228	6.83
Cape Peninsula.....	1966	144,949	1,014,983	29	8,812,544	4,679	5.31
	1967	152,547	1,053,675	41	9,474,081	4,746	5.01
	1968	162,233	1,099,504	40	11,996,983	3,576	3.06
Pretoria.....	1966	97,721	606,658	43	6,018,291	6,799	11.30
	1967	102,278	638,517	26	6,688,531	5,483	8.20
	1968	107,520	690,458	21	8,050,221	5,667	4.55
Durban.....	1966	117,294†	596,724	19	3,996,084	6,460	16.16
	1967	121,995†	614,748	14	4,487,724	5,536	12.33
	1968	126,748†	608,494‡	70	5,527,875	7,781	14.08
Port Elizabeth.....	1966	41,245	307,872	9	2,609,456	1,304	6.00
	1967	44,496	330,961	8	2,923,896	1,319	4.51
	1968	45,328	331,904	28	3,272,244	3,096	9.46
Pietermaritzburg.....	1966	17,461	121,216	38	1,244,740	1,760	14.14
	1967	18,022	122,140	9	1,354,250	799	5.90
	1968	18,788	122,784	24	1,655,300	3,453	20.83
Bloemfontein.....	1966	23,285	177,432	10	1,687,158	577	3.42
	1967	24,645	189,036	5	1,901,686	424	2.23
	1968	26,136	212,724	15	2,258,582	1,074	4.75
East London.....	1966	17,980§	139,368	16	1,105,250	991	8.97
	1967	18,627§	143,943	6	1,163,703	485	4.17
	1968	19,069	144,000	7	1,377,050	646	4.69
Kimberley.....	1966	8,737	69,335	6	578,698	299	5.17
	1967	9,124	71,428	7	585,569	361	6.16
	1968	9,719	76,798	6	896,235	287	3.20

* Includes phonogram receipts and estimated amounts for Government services.

† Includes Durban Municipal System.

‡ Decrease due to smaller number of accounts for trunk call debits rendered to subscribers as a result of the extension of direct dialling facilities.

§ Amended figures.

The estimated average amounts written off per R100 of revenue collected stated in cents, are as follows:—

1965-66: 8.94 = 0.09 per cent.

1966-67: 7.58 = 0.08 per cent.

1967-68: 6.76 = 0.07 per cent.

TELEGRAPHS

Item	1965-66	1966-67	1967-68
1. Telegraph offices.....	3,391	3,379	3,360
2. Telegraph circuit mileage.....	794,859	834,013	907,332
3. Inland and interterritorial telegrams accepted:—			
(a) Interterritorial Government and meteorological telegrams.....	43,559	45,769	67,293
(b) South African Government.....	744,335	679,508	670,510
(c) Railway.....	23,115	30,062	36,697
(d) Public paid.....	10,477,446	10,713,685	10,826,162
(e) Press.....	170,469	172,515	162,606
(f) Total.....	11,458,924	11,641,539	11,763,268
4. Overseas telegrams (outgoing):—*			
(a) Government.....	8,235	7,791	7,124
(b) Public paid.....	875,629	925,891	1,041,812
(c) Total.....	883,864	933,682	1,048,936
5. Total number of telegrams accepted.....	12,342,788	12,575,221	12,812,204
6. International telex service:—			
(a) Number of calls.....	200,276	268,748	347,437
(b) Number of paid minutes.....	1,196,465	1,490,202	1,843,742
7. Phototelegrams (transmitted):—			
(a) Inland.....	8,563	8,215	7,142
(b) Overseas.....	265	513	523
(c) Total.....	8,828	8,728	7,665
8. Number of telex subscribers.....	2,915	3,301	3,703

* Includes radio telegrams.

TELECOMMUNICATION ASSETS (EXCLUDING BUILDINGS AND SITES)

Assets as at 31st March	1966	1967	1968
Telephone subscribers equipment.....	(R1,000)	(R1,000)	(R1,000)
Exchange cables.....	64,868	69,067	73,373
Farm lines.....	59,324	61,079	63,859
Exchange equipment.....	36,278	37,003	38,383
Transmission equipment.....	69,484	77,194	85,550
Trunk lines.....	37,780	42,674	48,735
Trunk cables.....	33,650	34,352	34,870
Telegraph equipment.....	6,462	6,903	7,232
External services.....	12,574	13,963	15,474
Tools and mechanical aids.....	3,523	4,012	4,139
Training equipment.....	4,857	5,064	5,237
	357	364	404
TOTAL.....	329,157	351,675	377,256

TELEPHONE PLANT

As at 31 March	1966	1967	1968
1. Number of telephones:—			
Automatic.....	806,381	841,395	907,578
Manual.....	221,558	238,299	229,229
Farm and multi-party lines.....	91,939	100,117	102,398
Total.....	1,119,878	1,179,811	1,239,205
2. Exchange capacity (lines) (Exchanges over 200 lines only):—			
Automatic.....	568,660	572,471	609,514
Manual.....	136,293	134,388	143,168
Call-office lines.....	15,939	16,609	17,441
3. Open-wire carrier systems:—			
12-channel.....	333	385	425
3-channel.....	470	498	538
Single and rural channels.....	729	770	790
4. Carrier channels on paired and coaxial cables, microwave systems.....	5,322	5,910	6,870
5. Exchange area circuit mileage.....	1,963,177	2,023,514	2,089,311
6. Farm line circuit mileage.....	207,015	203,545	210,573
7. Trunk circuit mileage:—			
Physical (open-wire).....	137,340	138,491	139,389
Physical (cable).....	68,976	73,578	76,961
Carrier (open-wire).....	681,357	750,307	807,044
Carrier (cable).....	134,487	146,362	163,211
Microwave and radio.....	183,351	219,759	340,901
TOTAL.....	1,205,511*	1,328,497*	1,527,506*
8. Broadcast circuit mileage.....	27,601	27,601	24,319

* This total is in respect of item 7, only.

TELEGRAPH PLANT

As at 31 March	1966	1967	1968
1. Number of teleprinters:—			
Telex.....	3,026	3,503	4,098
Gentex*.....	1,219	1,271	1,280
Private line.....	1,241	1,262	1,287
TOTAL.....	5,486	6,036	6,665
2. Carrier telegraph systems:—			
12 to 24 channels.....	105	114	130
6 to 8 channels.....	85	91	95
3. Circuit mileages:—			
Physical (open-wire).....	30,377	30,864	31,289
Physical (cable).....	22,185	22,498	22,848
Carrier (open-wire).....	573,680	597,934	637,176
Carrier (cable).....	50,141	52,985	54,655
Microwave.....	118,476	129,732	161,364
TOTAL.....	794,859†	834,013†	907,332†

* Teleprinters in operation in post offices for the transmission of public telegrams.

† This total is in respect of item 3, only.

MAINTENANCE EXPENDITURE

	1965-66	1966-67	1967-68
	(R1,000)	(R1,000)	(R1,000)
1. Automatic subscribers' circuits.....	2,279	3,020	3,317
2. Manual subscribers' circuits.....	1,013	1,096	1,377
3. Farm lines.....	1,046	1,212	1,228
4. Exchange cable ⁽¹⁾	1,449	1,731	1,950
5. Automatic exchanges.....	1,950	2,341	2,589
6. Manual exchanges.....	580	663	651
7. Transmission equipment.....	1,125	1,319	1,341
8. Trunk lines.....	550	319	344
9. Trunk cables.....	37	47	55
10. Telegraph system.....	693	815	953
11. Overhaul of telephone equipment.....	1,153	1,205	1,267
12. Overhaul of teleprinters.....	119	114	107
13. Maintenance and replacement of tools.....	515	575	619
14. Radio and external services.....	358	434	425
15. Training.....	2,109	2,561	2,581
16. Recoveries and deviations ⁽²⁾	2,053	2,260	2,671
17. Records ⁽³⁾	267	316	362
18. Transport ⁽⁴⁾	(892)*	(979)*	(1,175)*
19. Miscellaneous ⁽⁵⁾	37	37	37
TOTAL⁽⁶⁾.....	17,333	20,065	21,874

(1) Includes cable diverts and cross-connections on main frames.

(2) Cost of recovering, transferring and deviating plant of all types.

(3) Exchange cable and line records.

(4) Motor and rail transport. * (Amount divided under items 1 to 17).

(5) Includes repayable work, hire of facilities on Railway routes.

(6) Does not include the salaries of professional, administrative, clerical and certain technical supervisory personnel.

REQUISITIONS DEALT WITH IN STORES DEPOTS

Item	1965-66	1966-67	1967-68
1. Engineering material:—			
Number of issues.....	202,900	218,283	234,551
Value of issues..... R	26,365,400	27,465,100	30,551,565
Number of recoveries.....	15,100	13,500	13,417
Value of recoveries..... R	3,347,400	3,203,200	3,220,800
Orders placed overseas..... R	9,383,800	6,528,900	9,572,710
Orders placed in South Africa..... R	13,948,500	21,461,500	31,614,127
Value of material received..... R	23,360,300	24,537,100	27,845,163
Stock as at 31 March..... R	7,736,200	6,660,800	6,407,854
Sold to other departments and administrations..... R	358,100	208,500	104,031
2. Postal stores:—			
Number of issues.....	171,669	133,200	138,557
Number of recoveries.....	27,125	27,100	26,810
Expenditure..... R	3,572,012	4,135,534	4,796,686
3. Postage stamps:—			
Value..... R	16,790,234	18,459,025	18,659,856
4. Postal orders:—			
Value (South African)..... R	28,435,608	31,565,933	34,575,231
Value (British)..... R	2,319,440	2,495,682	1,444,754
5. National savings certificates:—			
Value..... R	23,007,705	17,081,820	16,601,130
6. National savings stamps:—			
Value..... R	651,155	675,770	683,603
7. Revenue stamps:—			
Value..... R	13,197,926	14,047,747	15,581,019
8. Cigarette duty labels:—			
Value..... R	54,987,200	63,091,460	71,230,920
9. Entertainment tax labels:—			
Value..... R	252,554	230,522	187,508
10. Christmas stamps:—			
Value..... R	82,824	99,546	106,890

LOAN VOTE EXPENDITURE (CAPITAL)

Item	1965-66	1966-67	1967-68
	R	R	R
Telephone Subscribers' Plant.....	4,648,971	5,009,132	5,168,924
Exchange and Junction Cables.....	2,795,753	2,497,274	3,543,055
Automatic Switching.....	7,438,465	8,302,914	9,039,809
Manual Switching.....	147,665	274,978	281,118
Farm Lines.....	1,034,638	1,178,904	1,841,391
Overhead Trunk Lines.....	1,073,321	1,123,237	946,929
Trunk Cables.....	623,671	521,473	415,154
Transmission Equipment.....	5,080,140	5,365,865	6,593,448
Telegraph Subscribers' Plant.....	730,730	675,264	767,390
Departmental Telegraph Plant.....	1,184,404	870,629	918,569
External Services.....	449,336	533,384	176,725
Tools and Mechanical Aids.....	272,100	267,939	236,047
Training Equipment.....	12,621	11,395	44,452
TOTAL.....	25,491,815	26,632,388	29,973,011

POSTAL PROFIT AND LOSS ACCOUNT (Financial Year 1967-68)

TO EXPENDITURE:—

Traffic, operating and commercial.....	R
Stores (overhead).....	22,945,620
Administration and accounting.....	245,408
Rents, maintenance of P.W.D. buildings, lighting.....	1,349,742
Interest liability on capital value of P.W.D. buildings.....	162,637
Pension liability.....	795,400
Unemployment insurance liability.....	1,505,617
Conveyance of mails.....	11,789
Purchase of motor vehicles.....	8,719,497
Miscellaneous.....	203,843
	<u>3,537,157</u>

BY REVENUE:—

Cash collections from public:—

Postage.....	R
Ocean mail service.....	27,941,004
Private box rentals and private bag fees.....	1,106,415
Savings bank revenue.....	878,419
Postal order commission.....	1,688,719
Money order commission.....	449,913
Miscellaneous.....	271,131
	<u>722,465</u>

33,058,066
4,706,747

16,341

37,781,154

1,695,556

39,476,710

Free services to government departments.....
Cash collections from government departments: Bag fees and
box rentals.....

TOTAL REVENUE.....

Net loss.....

39,476,710

TELEGRAPH PROFIT AND LOSS ACCOUNT (Financial Year 1967-68)

To EXPENDITURE:—	R	By REVENUE:—	R	R
Traffic, operating and commercial.....	5,054,354	Cash collections:—		
Engineering (overhead).....	114,872	From public:—		
Stores (overhead).....	143,590	Telegrams.....	6,735,249	
Administration and accounting.....	430,768	Registered address fees.....	90,485	
Maintenance.....	1,966,465	Miscellaneous.....	1,023,133	
Rents, maintenance of P.W.D. buildings, lighting.....	67,765	Teleprinter and telex services.....	5,020,229	
Interest liability on capital value of P.W.D. buildings.....	259,369			12,869,096
Pension liability.....	456,247	From government departments:—		
Unemployment insurance liability.....	3,573	Telegrams.....	159,116	
Interest on stores reserve.....	39,178	Registered address fees.....	5,642	
Interest on capital.....	1,274,051	Teleprinter and telex services.....	207,223	
Contribution for renewals.....	282,223			371,991
Purchase of motor vehicles.....	20,264	Free services to government departments:—		
Miscellaneous.....	1,145,666	Meteorological services.....	152,676	
		Miscellaneous.....	12,364	
TOTAL EXPENDITURE.....	11,258,385			165,040
Net profit.....	2,147,742			
				<u>13,406,127</u>

TELEPHONE PROFIT AND LOSS ACCOUNT (Financial Year 1967-68)

To EXPENDITURE:—	R	By REVENUE:—	R	R
Traffic and operating.....	14,254,532	Cash collections:—		
Commercial.....	4,605,310	From public.....		
Engineering (overhead).....	1,315,893	From government departments.....	90,885,095	
Administration and accounting.....	1,140,363	Free services to government departments.....	3,910,458	
Stores (overhead).....	614,041			17,360
Maintenance.....	19,907,451			
Rents, maintenance of P.W.D. buildings, lighting.....	221,367			
Interest liability on capital value of P.W.D. buildings.....	674,361			
Pension liability.....	2,600,602			
Unemployment insurance liability.....	20,363			
Interest on stores reserve.....	374,093			
Interest on capital.....	17,590,422			
Contributions for renewals.....	3,946,651			
Purchase of motor vehicles.....	486,324			
Miscellaneous.....	4,068,562			
TOTAL EXPENDITURE.....	71,820,245			
Net profit.....	22,992,578			
				<u>94,812,823</u>

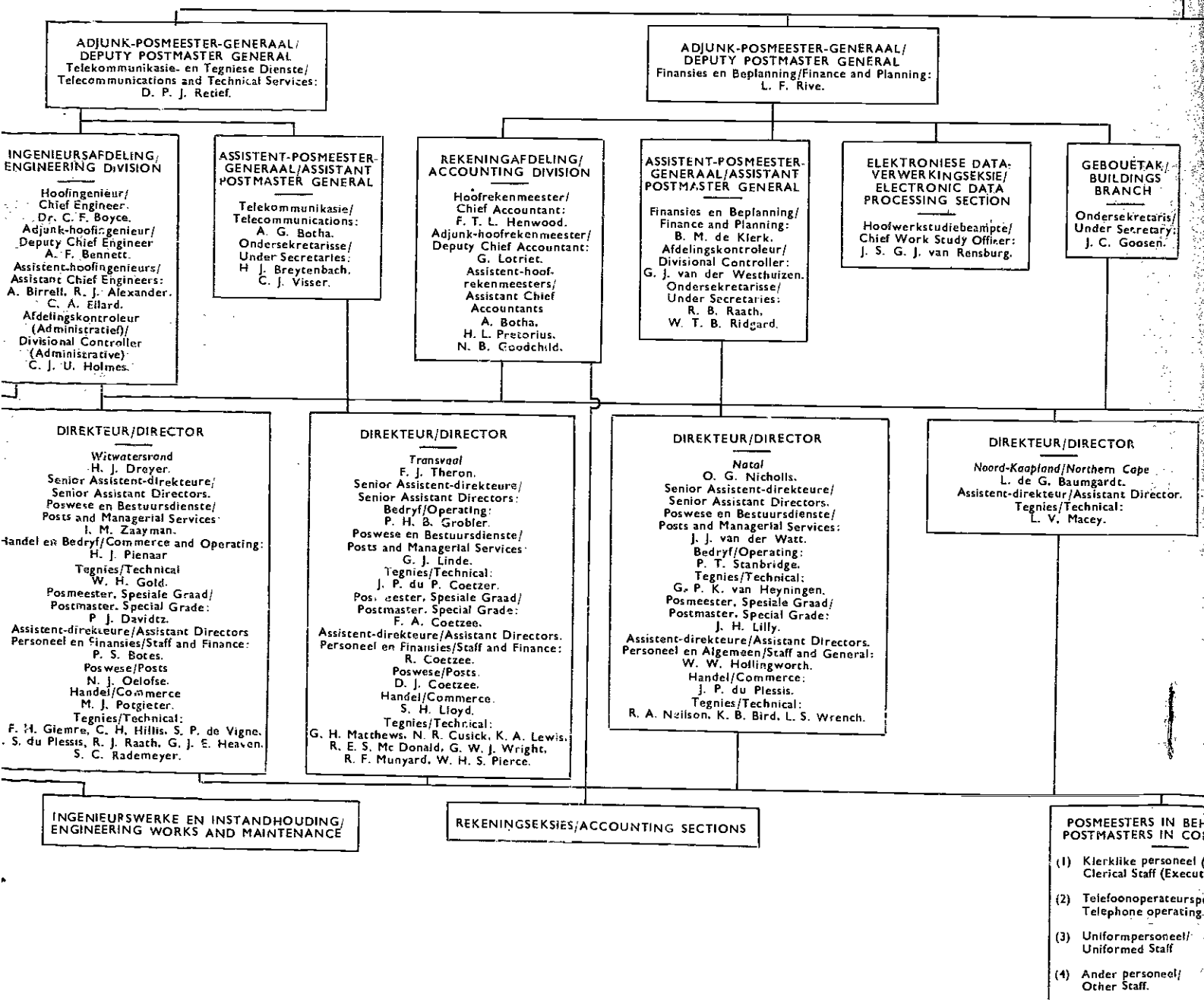
94,812,823

ORGANISASIE VAN DIE DEPARTEMENT
VAN DIE REPUBLIEK VAN SUID-AFRIKA

ORGANISATION OF THE DEPARTMENT
OF THE REPUBLIC OF SOUTH AFRICA

MINISTER
Sy Edele/The Hon.
M. C. G. J. van der Merwe

SEKRETARIAAT/SECRETARIAT
POSTMEESTER-GENERAL
POSTMASTER-GENERAL
M. C. G. J. van der Merwe



**DEPARTMENT VAN POS-EN-TELEGRAAFWESE
ZUID-AFRIKA SOOS OP 1.1.1969.**

**DEPARTMENT OF POSTS AND TELEGRAPHS
SOUTH AFRICA AS AT 1.1.1969.**

