

PERSONAL

8ta Connect

Download &
Installation Instructions

Telkom

Note: This software is only compatible with Huawei devices. The Telkom SIM card should work in other manufacturers' devices and with other Connection Managers if they are not network locked. If the device or software notifies you that the device can only be used on a specific operator, please contact that operators call centre and they will provide you with a unlock code for the device.

Download instructions:

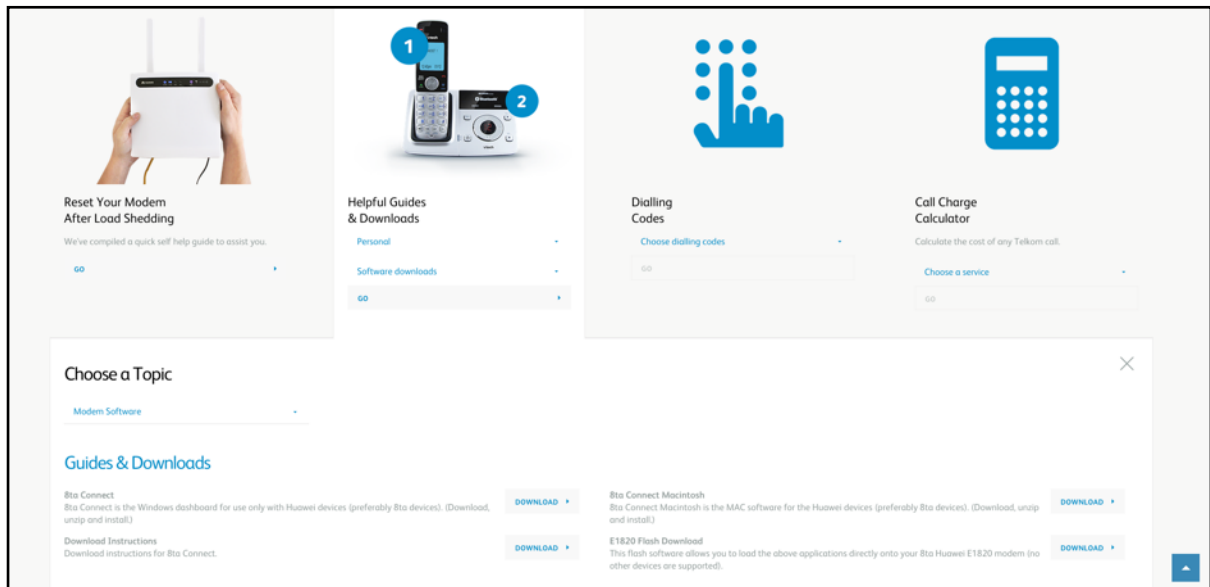
Go to www.telkom.co.za

Navigate to Help> Get Help> All Tools> Helpful Guides and Downloads.

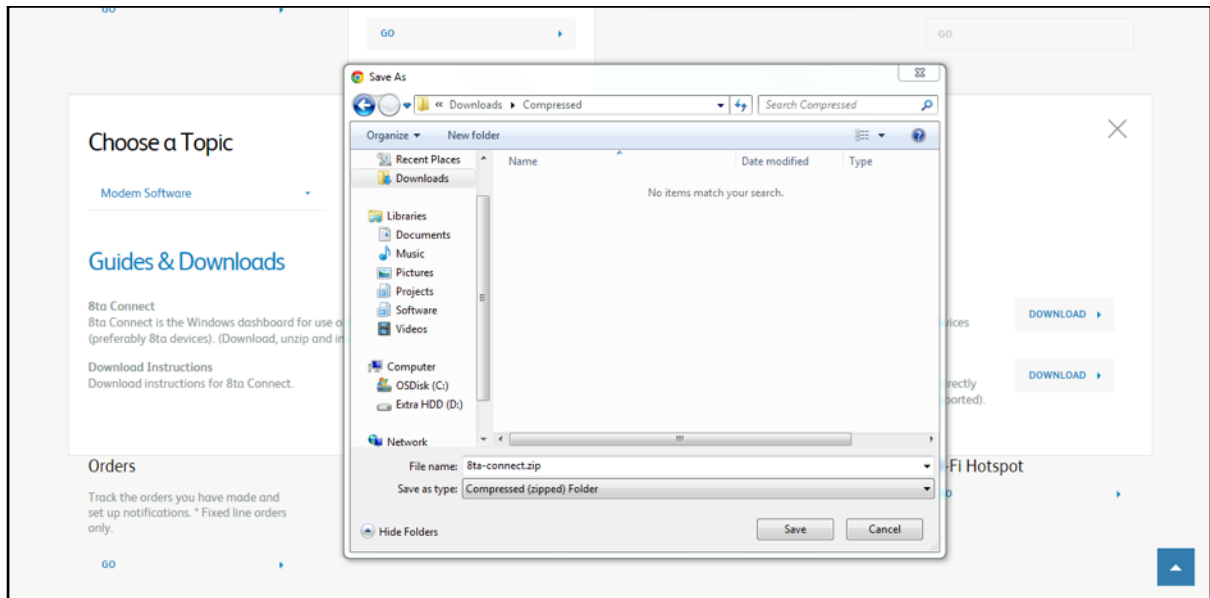
Choose Personal> Software Downloads> Modem Software

Click on the Download button to the right of '8ta Connect'

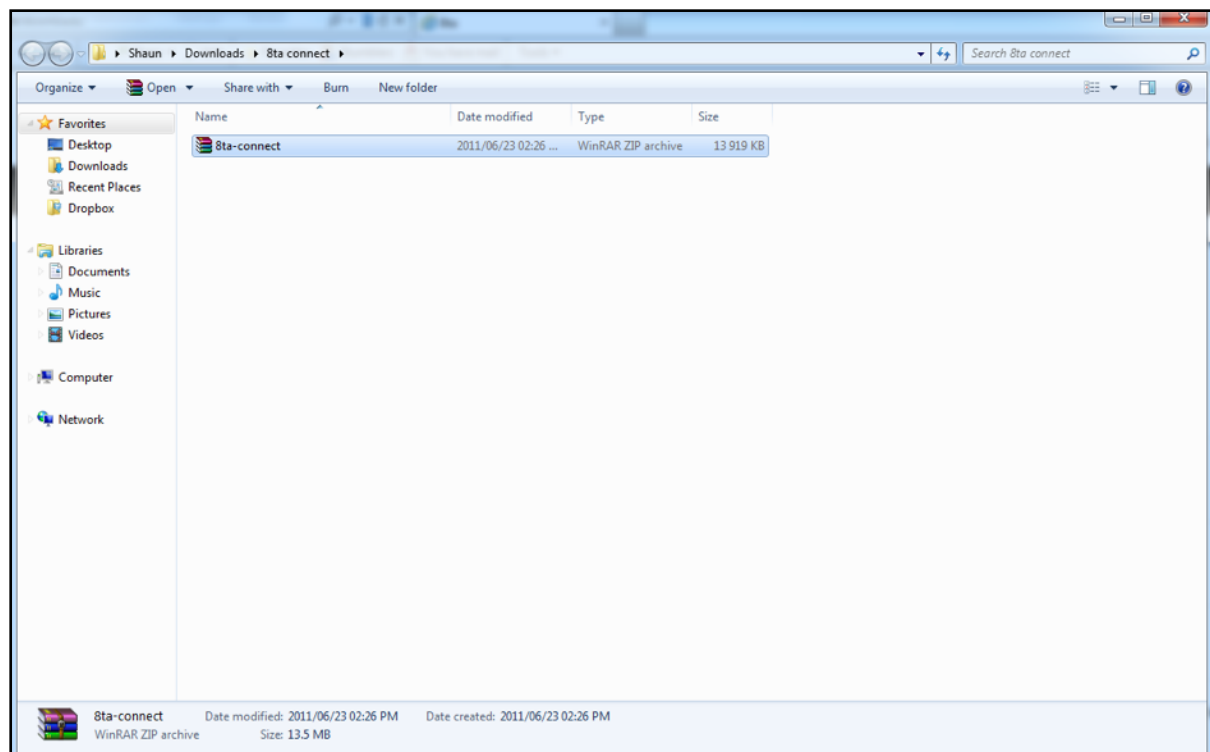
The file will automatically start to download.



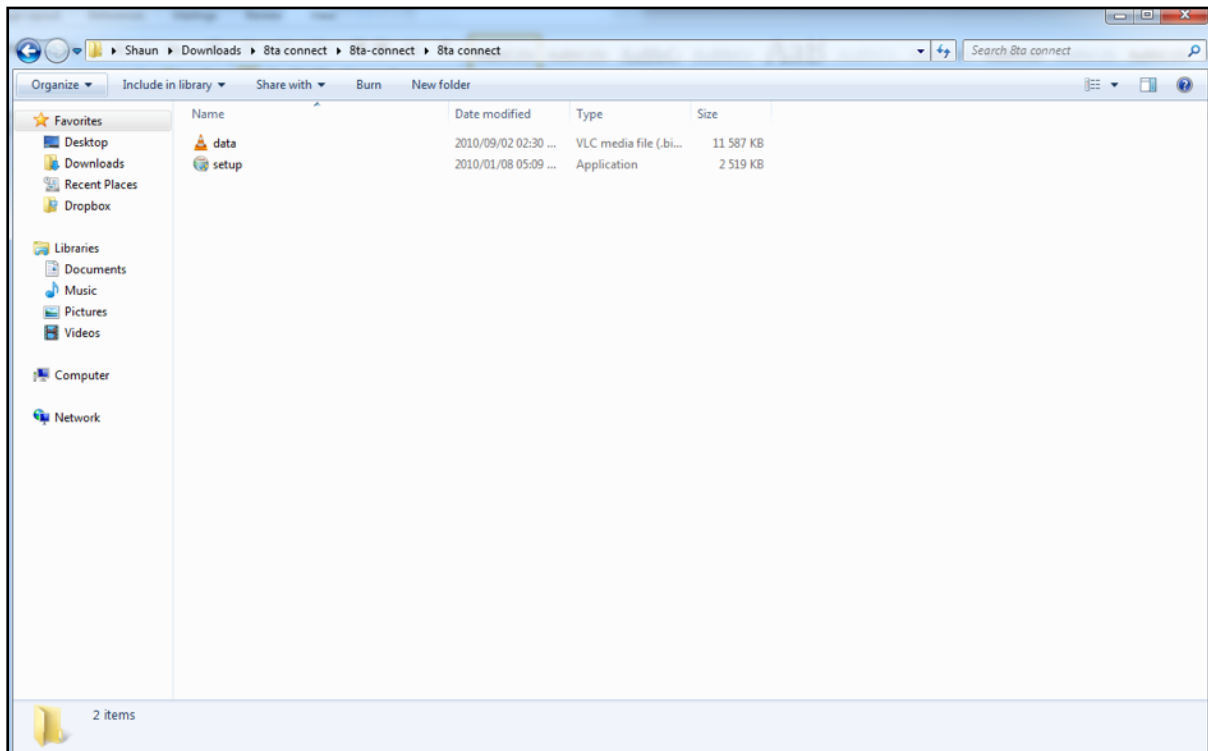
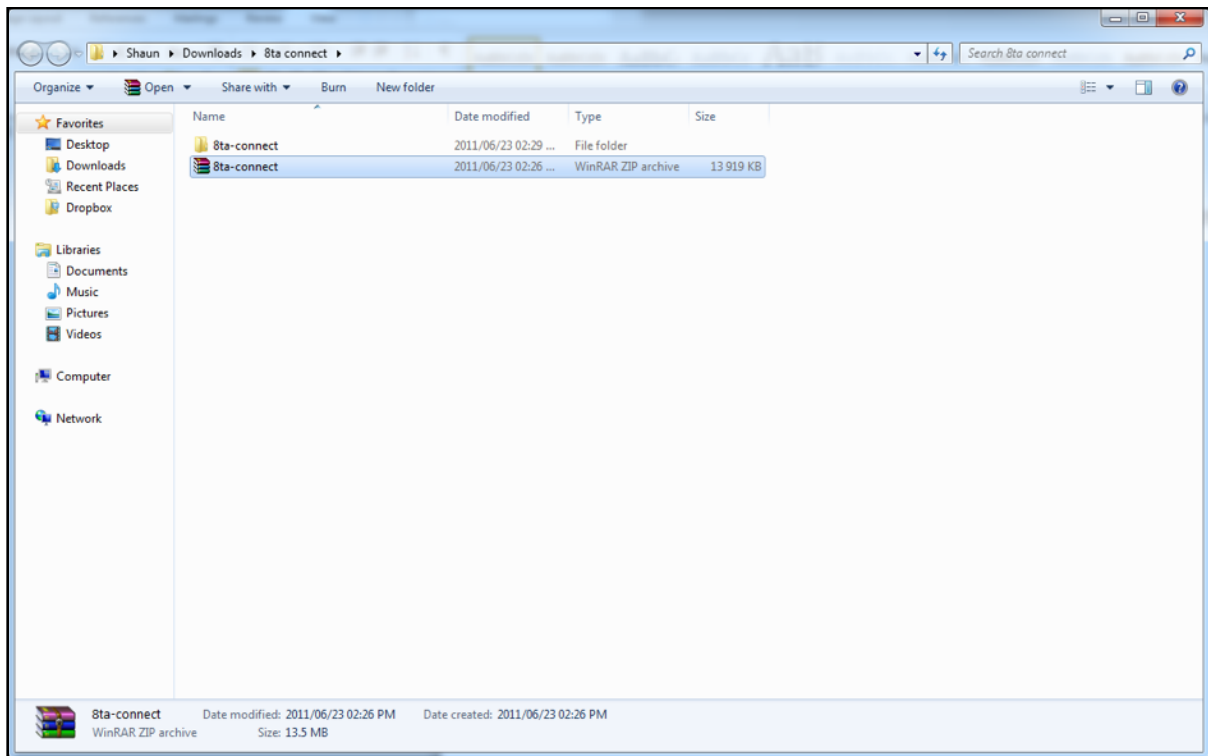
Once the download is complete, select the folder where you want to save the zip file, then click save.



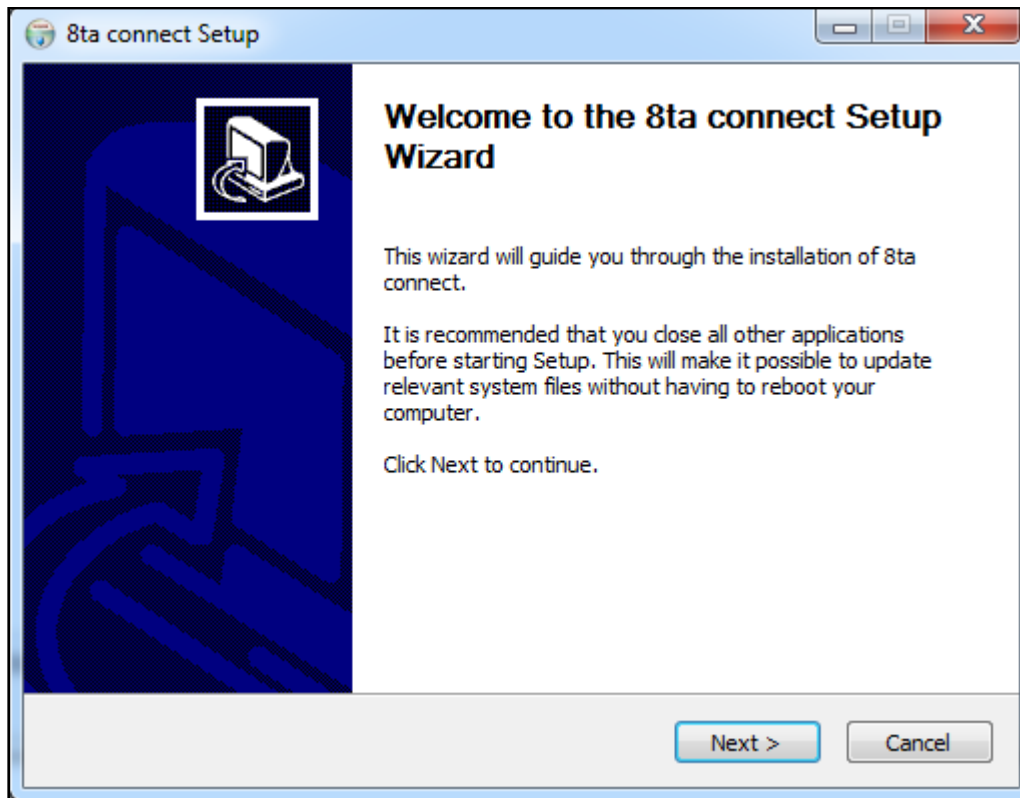
Browse to the folder where you saved the file and extract the installation file.



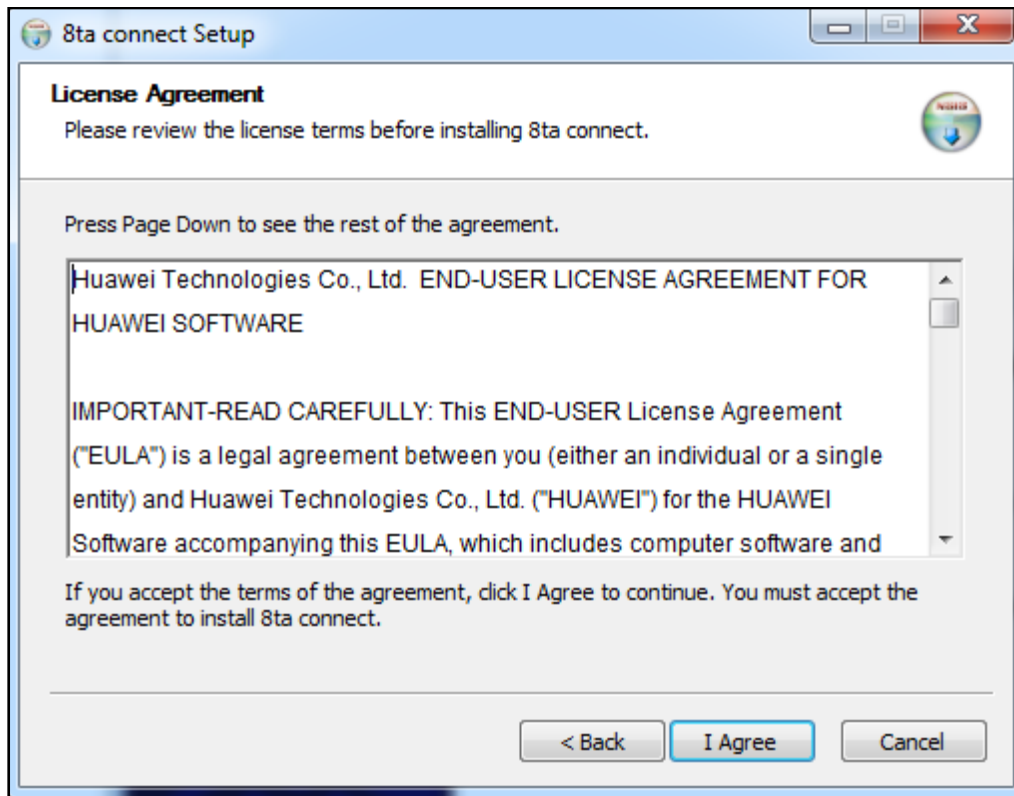
Locate the setup.exe in the extracted folder and double click to start the installation.



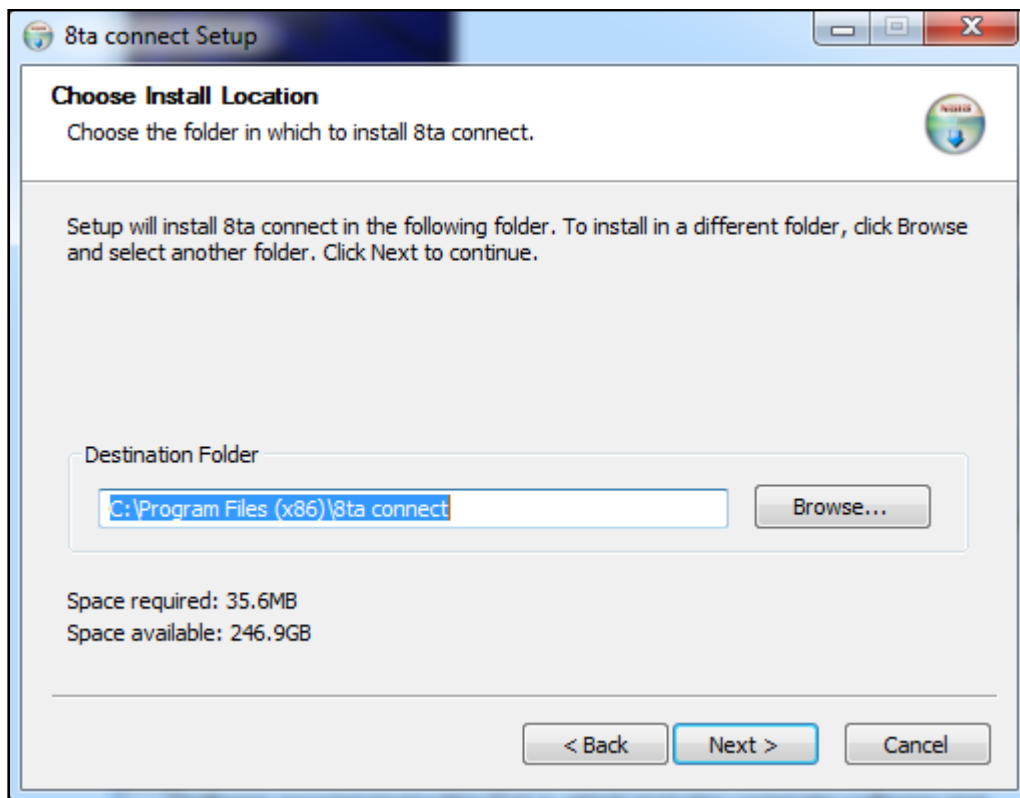
Click Next.



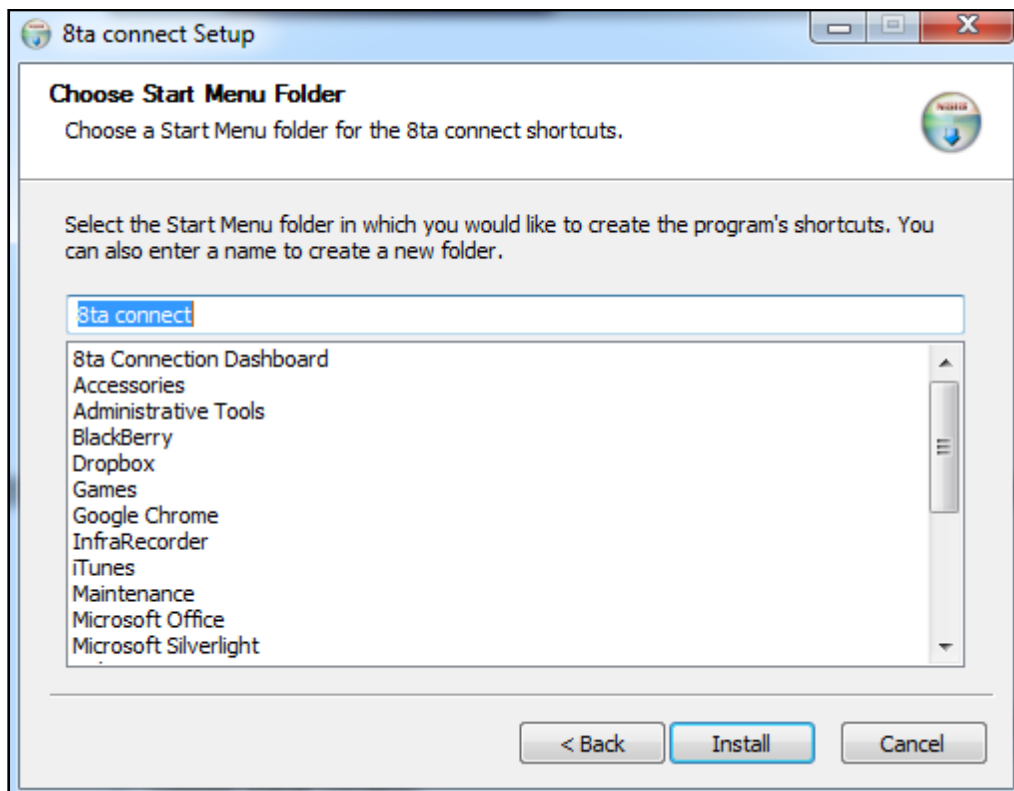
Read through the license agreement and if you agree, click I Agree.



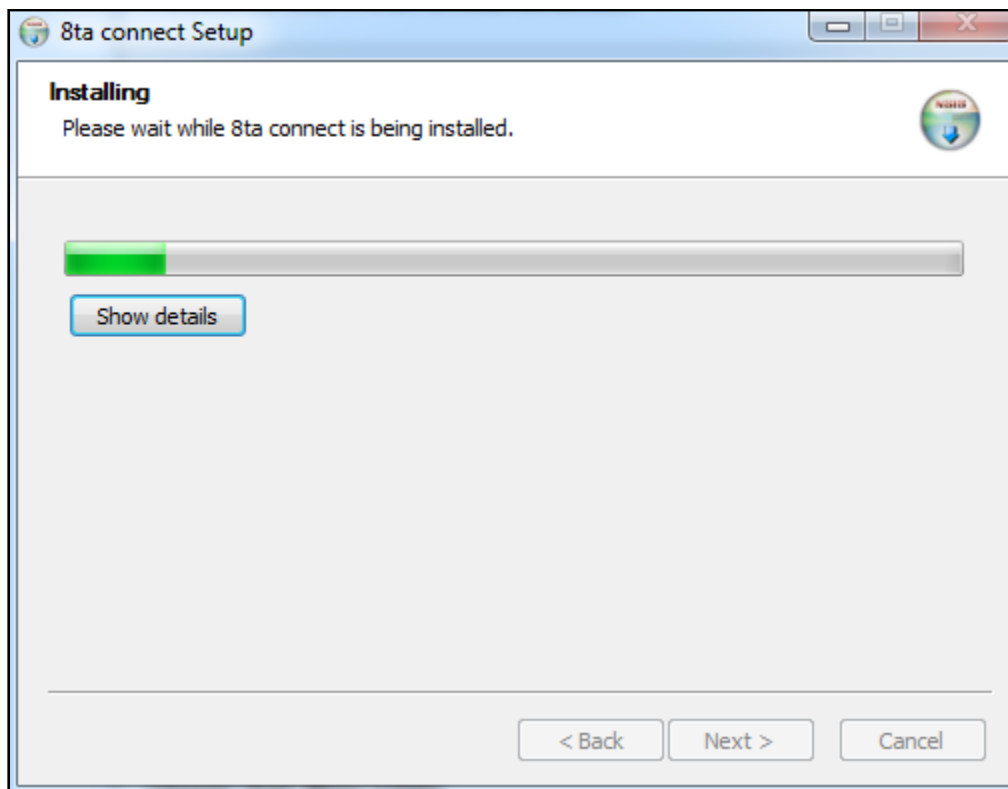
If you wish to change the installation directory do here, otherwise click Next.



Choose a name for the Start Menu folder or use the default, then click Install.



The installation will commence.



Once completed, please click Finish and as a precaution, restart your computer.

