

HOME & BUSINESS

Web based forms

Learn how web based forms work in MS Internet Explorer

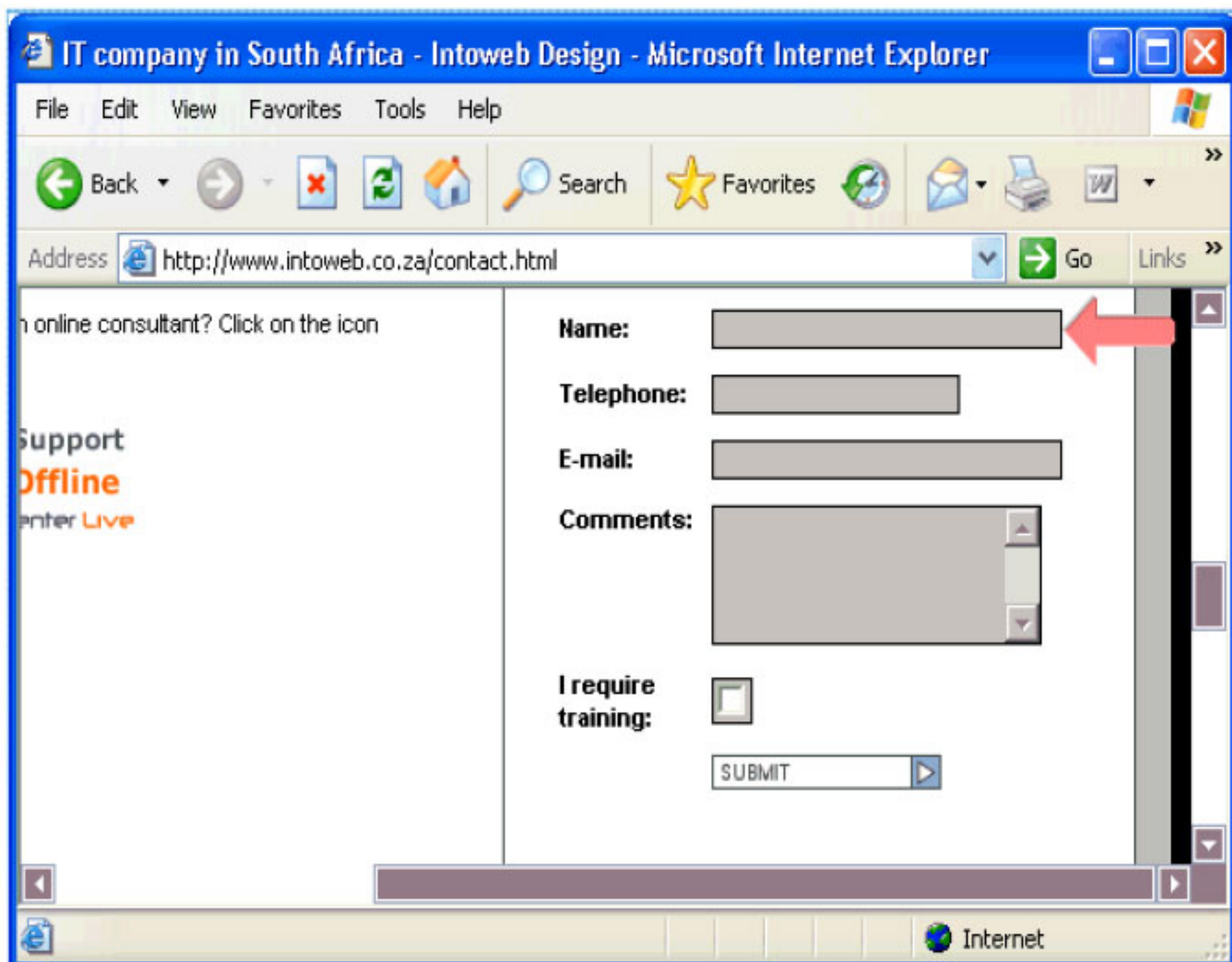
Telkom

MS Internet Explorer

Web based forms

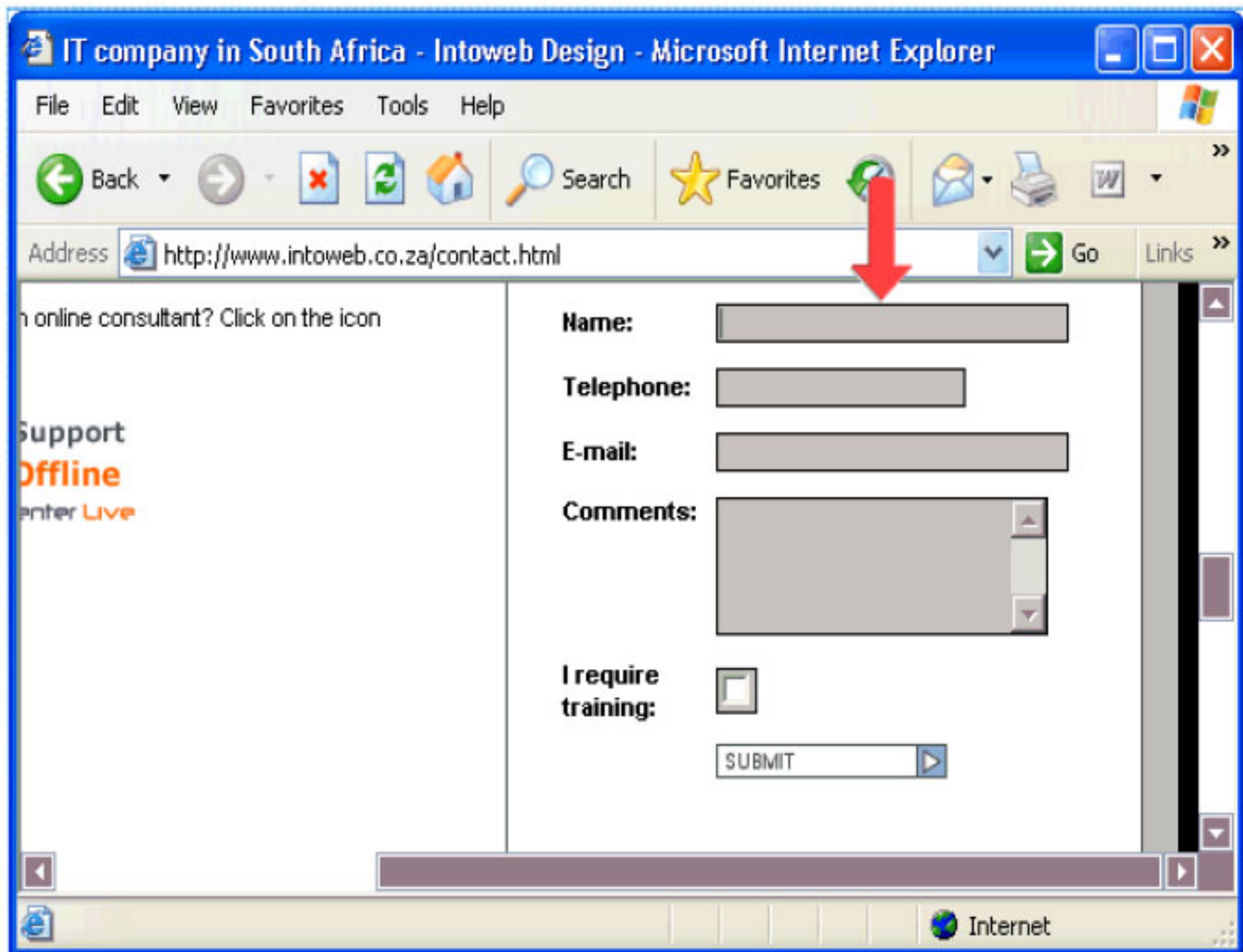
Step 1 of 3:

This is an example of a web based form.
Click on the first block to activate the cursor.



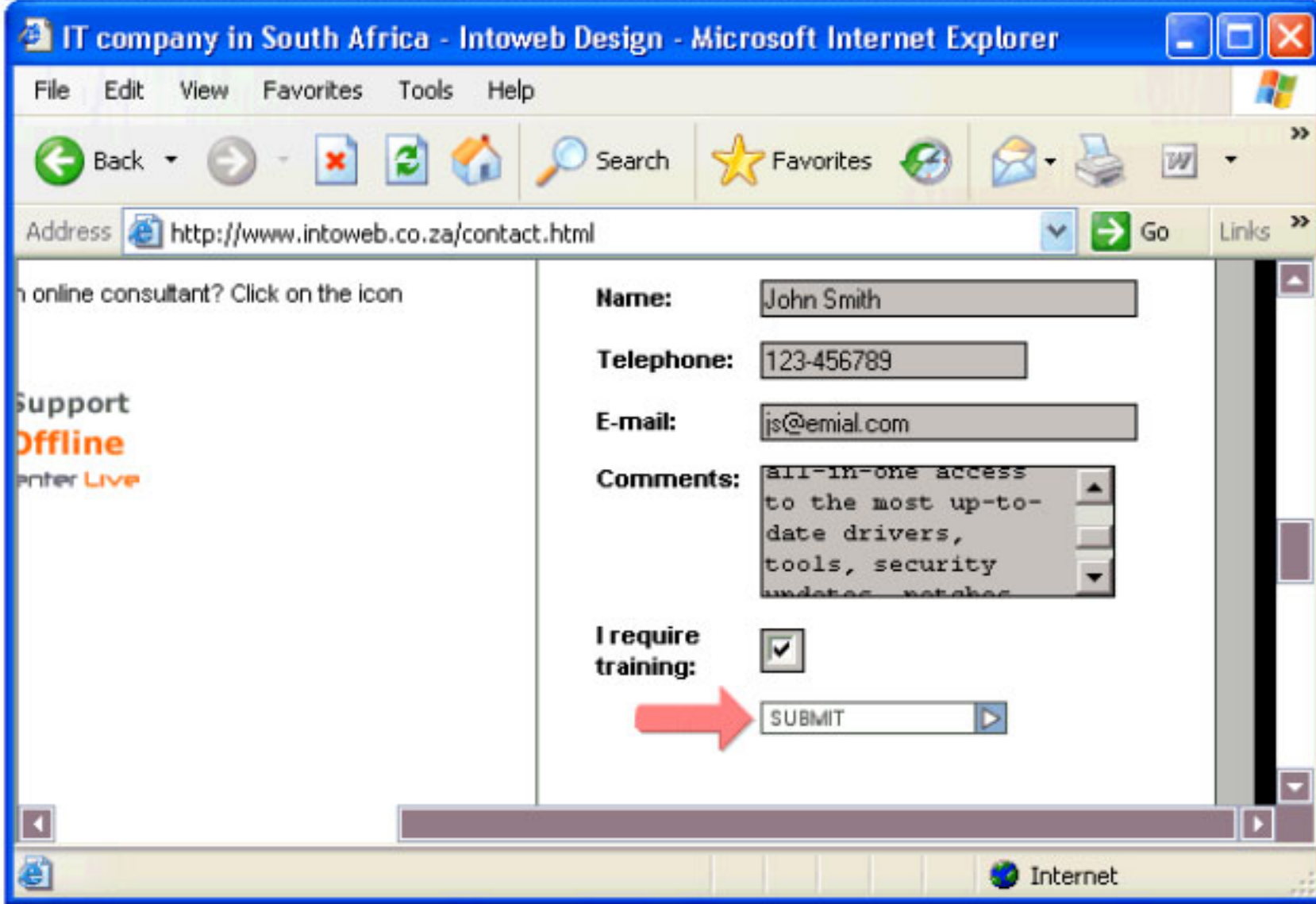
Step 2 of 3:

You can now start to enter your information.



Step 3 of 3:

We have entered the following information.
By clicking on "Submit" the form with your information will be sent.



The screenshot shows a Microsoft Internet Explorer browser window. The title bar reads "IT company in South Africa - Intoweb Design - Microsoft Internet Explorer". The address bar contains "http://www.intoweb.co.za/contact.html". The page content includes a contact form with the following fields:

- Name:** John Smith
- Telephone:** 123-456789
- E-mail:** js@emial.com
- Comments:** all-in-one access to the most up-to-date drivers, tools, security updates, patches
- I require training:**

A red arrow points to the "SUBMIT" button. On the left side of the page, there is a "Support" section with "Offline" and "enter Live" text.