

Regulatory and Safety Notices

Before connecting the Smart Business Gateway to the telephone network, you may be required to notify your local serving telephone company of your intention to use "customer provided equipment." You may further be required to provide any or all of the following information:

- PSTN line Telephone numbers to be connected to the system
- Model name: Smart Business gateway
- Local regulatory agency registration number: locally provided
- Registered jack: RJ-45

The required regulatory agency registration number is available from your local Aria Technologies Africa representative.

If the telephone company determines that customer provided equipment is faulty and may possibly cause harm or interruption in service to the telephone network, it should be disconnected until repair can be affected. If this is not done, the telephone company may temporarily disconnect your service.

The local telephone company may make changes in its communications facilities or procedures. If these changes could reasonably be expected to affect the use of the Smart Business gateway or compatibility with the network, the telephone company is required to give advanced written notice to the user, allowing the user to take appropriate steps to maintain telephone service.

The Smart Business gateway complies with rules regarding radiation and radio frequency emission as defined by local regulatory agencies. In accordance with these agencies, you may be required to provide information such as the following to the end user:

WARNING

This equipment generates and uses R.F. energy, and if not installed and used in accordance with the Instruction Manual, it may cause interference to radio communications. It has been tested and found to comply with the appropriate limits for a telecommunication device. The limits are designed to provide reasonable protection against such interference, when operated in a commercial environment.

Operation of this equipment in a residential area could cause interference, in which case the user, at his own expense, will be required to take whatever measures may be required to correct the interference.

1. Radio Frequency Emissions:

FCC Compliance statement:

This device complies with Part 15 of the FCC rules. Operation is subject to the following conditions;

- (1) This device may not cause harmful interference.
- (2) This device may accept any interference received, including interference that may cause undesired operation.

This Equipment has been tested and found to comply with the limits for a Class B digital device, pursuant to Part 15 of the FCC rules. These limits are designed to provide reasonable protection against harmful interference in a residential installation. This equipment generates, uses and can radiate radio frequency energy and, if not installed and used in accordance with the instructions, may cause harmful interference to radio communications. However, there is no guarantee that interference will not occur in a particular installation. If this equipment does cause harmful interference to radio or television reception, which can be determined by turning the equipment off and on, the user is encouraged to try to correct the interference by one of the following measures:

- Reorient or relocate the receiving antenna.
- Increase the separation between the equipment and the receiver.
- Connect the equipment into an outlet on a different circuit from that to which the receiver is connected.

If problems persist, consult the dealer or an experienced radio/TV technician for help.

CAUTION:

Any changes or modifications in construction of this device which are not expressly approved by the party responsible for compliance could void the user's authority to operate the equipment.

European Union Declarations of Conformity:

Aria Technologies Africa (Pty) Ltd. declares that the equipment specified in this document, which bears the "CE" mark, conforms to the European Union Radio and Telecommunications Terminal Equipment Directive (R&TTE 1999/5/EC) including,

Electromagnetic Compatibility Directive (2004/108/EEC) and

Low Voltage Directive (2006/95/EEC)

The product fulfills the essential requirements of the harmonized standards shown above.

2. Product Safety Instructions

This product complies with and conforms to the following international Product Safety standards as applicable:

Safety of Information Technology Equipment, IEC 60950-1, including

Relevant national deviations as listed in Compliance with IEC for Electrical Equipment (IECEE)

Safety of Information Technology Equipment, CAN/CSA-C22.2 No. 60950-1/UL 60950-1

3. Privacy:

This multi-line telephone system (MLTS) implements security and encryption technologies appropriate for DECT however, privacy of communications may not be ensured when using this telephone.

4. RF Exposure Statement:

This equipment complies with FCC/IC RF radiation exposure limits set forth for an uncontrolled environment.

Use of other accessories may not ensure compliance with FCC/IC RF exposure guidelines.

This device must not be co-located or operating in conjunction with any other antenna or transmitter. The changes or modifications not expressly approved by the party responsible for compliance could void the user's authority to operate the equipment.

5. Base Station :

This equipment complies with FCC/IC RF radiation exposure limits set forth for an uncontrolled environment.

This equipment should be installed and operated with a minimum distance of 20 centimeters between the radiator and your body.

This system employs a Lithium battery as back-up power for the real-time clock and memory. The battery is not replaceable in the field. RISK OF EXPLOSION IF BATTERY IS REPLACED BY AN INCORRECT TYPE. Dispose of used batteries accordance with the manufacturer's instructions.

SBG Wired Installation Instructions

Unpack the SBG from its box. Follow the below instructions to mount and install the SBG.

Wall Mounting

It is recommended that the SBG is wall mounted, below is instructions on how to wall mount the SBG.

1. Hold the wall mount bracket to the wall and mark the bracket holes to be drilled.
2. Install 3 anchor plugs into the wall.
3. Insert 3 included screws into the 3 anchor plugs.
4. Install the OptiCon SBG-1000 system to the wall mount bracket.

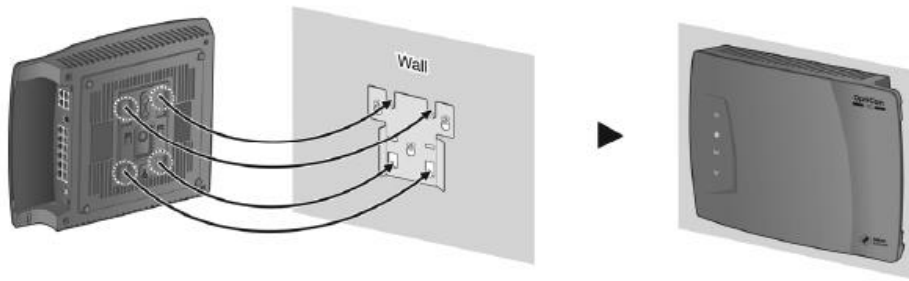


Figure 1 - Wall mounting

Connections

Connection for AC/DC adapter

1. Open the side cover.
2. Connect the plug of AC/DC adapter on the right side of the OptiCon SBG-1000 system.
3. Close the side cover and insert OptiCon SBG-1000 system to the wall mount bracket.
4. Connect the plug of power cord to a wall outlet.

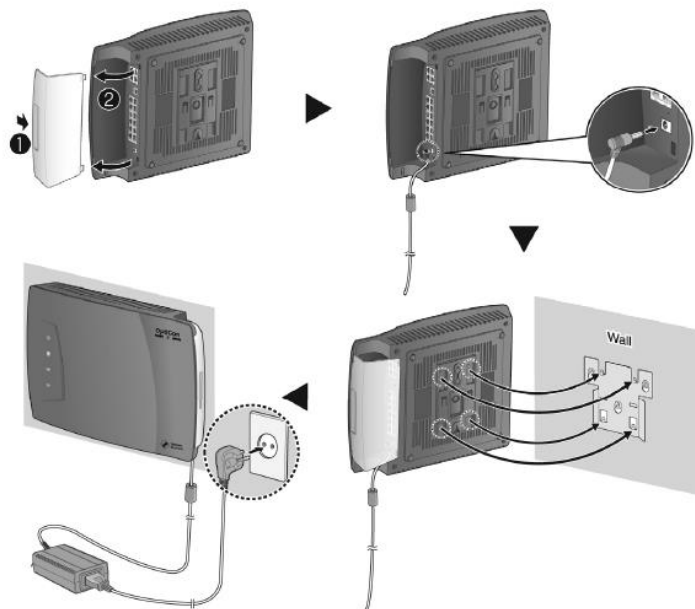


Figure 2 - Connection for AC/DC Adapter

Connecting all Equipment to SBG.
Connecting the LIP 9020 and LIP 9002

The LIP Terminals must be connected to the 4 POE LAN connections on the SBG. (First 4 LAN ports marked in RED)

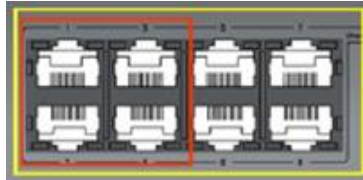


Figure 3 - POE Ports.

Then connect the LAN cable that is supplied with the Terminals to the Ethernet connection on the LIP 9020 and LIP 9002.

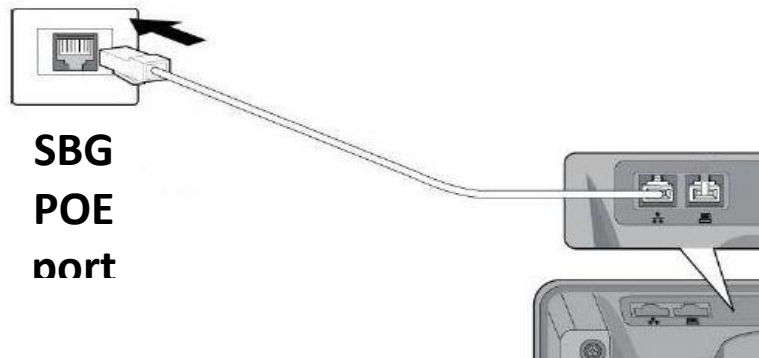


Figure 4 - LIP 9020/9002

Note: That the Ethernet Cable must not exceed 100 Meters. Cables to be used is UTP CAT5/E, CAT6 cable. If the premises has a LAN Network with POE connect the Terminals to the Network and then run a fly lead (LAN cable) to any of the 8 LAN ports marked in Yellow on the SBG.

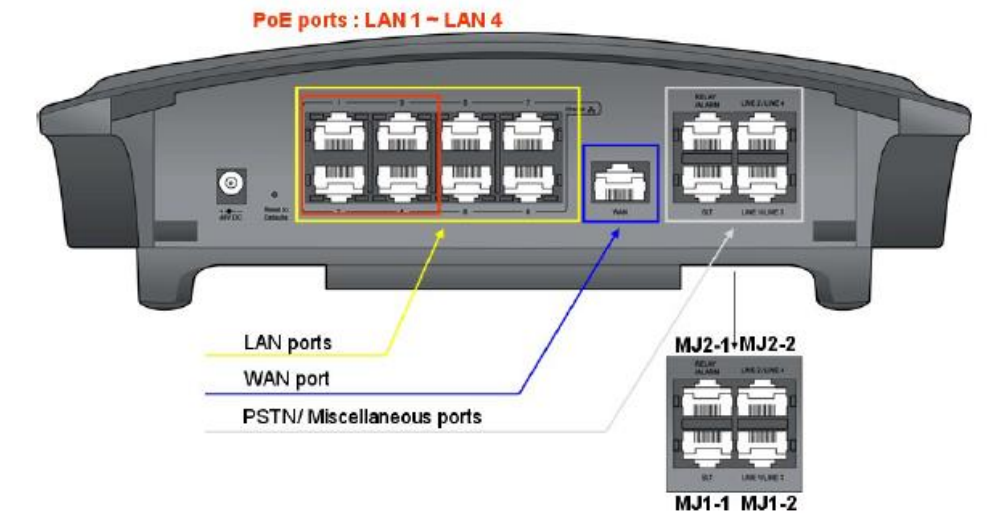


Figure 5 - SBG connection ports described.

Connections for LAN/ WAN/ PSTN

Port Definition – Front Side

Marked in Yellow is the LAN ports of the SBG.

Marked in Red is the POE LAN ports of the SBG. (Power over Ethernet)

Marked in Blue is the WAN port (Ethernet/Internet link to a ADSL router)

Marked in Grey is the CO Line ports and Relay and SLT port. (MJ1-2 is for CO line 1 and 3 and 2-2 is for CO line 2 and 4; MJ 1-1 is SLT and 2-1 is Relay port.)

CO Line Connection

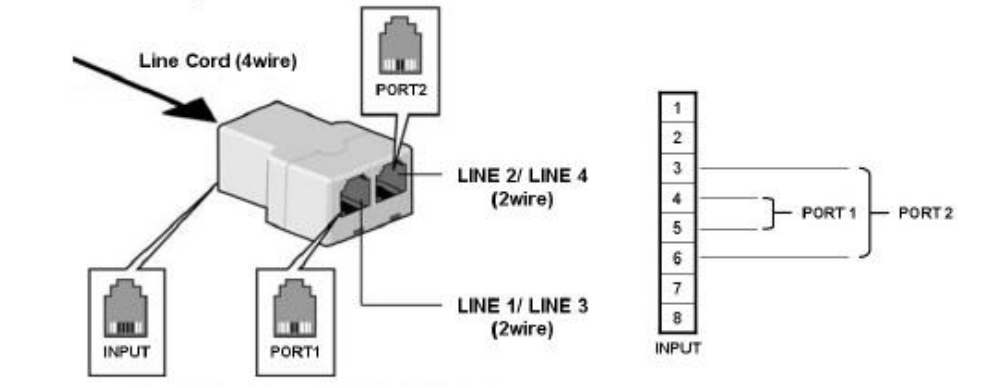


Figure 6 - CO line connection.

Supplied with the SBG is two CO line splitters and connection cables.

Connect the Line cord from the Telkom Lightning protection to the SBG CO line with the splitter in between to split line 1 and 3 and line 2 and 4

Note: MJ 1-2 is for CO line 1 and 3 and MJ 2-2 is for CO line 2 and 4 as per Figure 5.

Now connect the other side of the Lightning protection to the Wall Box on the wall from your Telkom line.

Wait until the Terminal displays the Station number.

System is ready for use.

Basic Features and Feature Codes for the LIP 9002.

<u>Feature</u>	<u>Feature Code</u>	<u>Description</u>
Group Call pick up	* * Group number (631)	To pick up a call that is in a Ring group.
Direct Call pick up	7 and Extension number (7 and 12)	To pick up a call that rings at another Extension. (Ext 12)
Call Forward	54	To forward the Extension when the person is not available.
Cancel Forward	54 #	To Cancel Forward
Co Line access	0	To Access any of the Co Lines in CO group 1.
Individual CO line access	8801-3	To Access a individual Co Line.
Conference Flex button feature	51	Use this code to program a Conference Flex button on LIP-9002.

Directed Call Pick-Up

Description

A station may answer incoming and transferred intercom, CO calls ringing at another station (Call Pick-Up). All ringing calls are subject to Directed Call Pick-up except Queue Callbacks.

To Pick-up a call ringing at another station:

1. Lift the handset or press [SPEAKER].
2. Dial 7 (Directed Call Pick-up code).
3. Dial the ringing station's Extension number (12).

Group Call Pick-Up

Description

A station may answer incoming and transferred intercom, CO calls ringing at another station (Call Pick-Up). A group is set up with All Extensions.

To Pick-up a call ringing at another station:

1. Lift the handset or press [SPEAKER].
2. Dial ** (631 Group Call Pick-up code).

Call Forward LIP-9020

Description

Users may have incoming calls re-routed to other stations, station groups, or over a system CO line (Off-Net). The user selects the type and condition under which calls are to be forwarded by entering a Call Forward code as follows:

To activate Call Forward, Unconditional or Busy/No Answer:

1. Lift the handset or press the [SPEAKER] button to receive dial tone.
2. Press the [FWD] button. (The First Soft key)
3. Dial desired Call Forward code (1-4). (Unconditional 1)
4. Dial the station or station group to receive calls. (Type in STA 12)
5. Replace the handset, return to idle.

Call forward Types:

Code 1: Unconditional; all calls to the station, except recalls, are forwarded internally or externally immediately upon receipt.

Code 2: Busy; if the station is busy, forwards all calls, except recalls, to the selected station.

Code 3: No Answer; forwards all calls, except recalls, to the selected station when the station does not answer within the No Answer timer.

Code 4: Busy/No Answer; forwards calls if the selected station is busy or does not answer within the No Answer timer.

To deactivate Call forward:

1. Lift the handset or press the [SPEAKER] button to receive broken dial tone.
2. Press the Conf Button (The First Soft key)
2. Press the # key, Call Forward will deactivate.

Call Forward LIP-9002

Description

Users may have incoming calls re-routed to other stations, station groups, or speed. The user selects the type and condition under which calls are to be forwarded by entering a Call Forward code as follows:

To activate Call Forward, Unconditional or Busy/No Answer:

1. Lift the handset or press the [SPEAKER] button to receive dial tone.
2. Press 54 (Forward Feature code).
3. Dial desired Call Forward code (1-4). (Unconditional 1)
4. Dial the station or station group to receive calls. (Type in STA 12)
5. Call forward is now set.

To deactivate Call forward:

1. Lift the handset or press the [SPEAKER] button to receive dial tone.
2. Dial 54 # Call Forward will be deactivated.

Three -Party voice Conference LIP-9020

Description

The system will allow three internal or external parties to be connected on a call, conference. An unlimited number of 3-party conferences may be established.

To establish an ad-hoc conference:

1. Establish first call.
2. Press the [CONF] button; and the connected party is placed on exclusive hold (the user receives dial-tone).
3. Make second call.
4. When connected, press [CONF]; the new call is placed on exclusive hold.
5. Press [CONF] button to establish 3-party conference.

Three -Party voice Conference LIP-9002

First Program a Conference flex button.(If this feature is required.)

Press the Transfer button

Then press the 4th Flex button

Then press the Transfer button again and dial 51.(51 is the Conference feature code)

Press Hold to save.

Conference button is created on Flex 4

1. Establish first call.
2. Press the [CONF] flex button; and the connected party is placed on exclusive hold (the user receives dial-tone).
3. Make second call.
4. When connected, press [CONF] flex button; the new call is placed on exclusive hold.
5. Press [CONF] flex button twice to establish 3-party conference.

Night service

Description

This feature will allow the Company to set up a Voice mail service for Clients that wants to get in touch with the Company after hours, to allow the Client to leave their contact information. This will help the Company to get in touch with new clients after hours.

Voice Mail set-up

Dial 630

Enter the Password 10*

Press 8 to Edit your Message or Password

Press 1 to edit your Greeting

Press 5 to Listen to your current greeting

Press 7 to record a new message.

Call Forward to Voice mail.

Press the Speaker button / Lift Handset

Press Forward on the First Soft key

Select Forward Option (Unconditional 1)

Select Option GPR Voice mail Group (Type in 630)

All Calls will be forwarded to the Voice mail.

This feature will be used every Day when the Company is closed.

Note: The LIP-9002 cannot forward the Night Service for Incoming calls, The Nights service must be forwarded from Attendant (STA 10)

Speed dials

How to program a Common Speed Dial from Attendant STA 10 (LIP-9020)

Press TRANS/PGM

Press the Speed Button

Select the Speed Bin 200-999(Select the bin that is available next on Display 200)

Type in Cell number or Office number

Press Hold to save the Speed Number

Type in Name Same as per Cell phone (For the letter C press number 2 three times)

Press Hold to save Speed dial.

Note: Only the Attendant Station and the System Administrator can create Common Speed dials.

How to program a Individual Speed Dial from LIP-9020 and LIP-9002

Press Transfer

Press the Speed Button

Select the Speed Bin 00(Select the bin that is available next on Display 00-19)

Type in Cell number or Office number

Press Hold to save the Speed Number

Type in Name Same as per Cell phone (For the letter C press number 2 three times)

Press Hold to save Speed dial.

Do Dial Speed dial,

Press the Speed button

Enter the Speed bin number (200-999 Common) or (00-19 Individual)

Call will be made.

Music on hold

The Default- tone- that is on the SBG / Or the One message that can be recorded on the Voice mail to be used as Music on Hold.

Ring List

The Ring list was pre configured so that all Calls will ring at STA 10 and after 5 Ring cycles STA 12 will then start to ring.

Note: For more features please refer to the User Manual on the CD supplied.