

HOME & BUSINESS

# Internet Security Settings

How to setup internet security on  
MS Internet Explorer

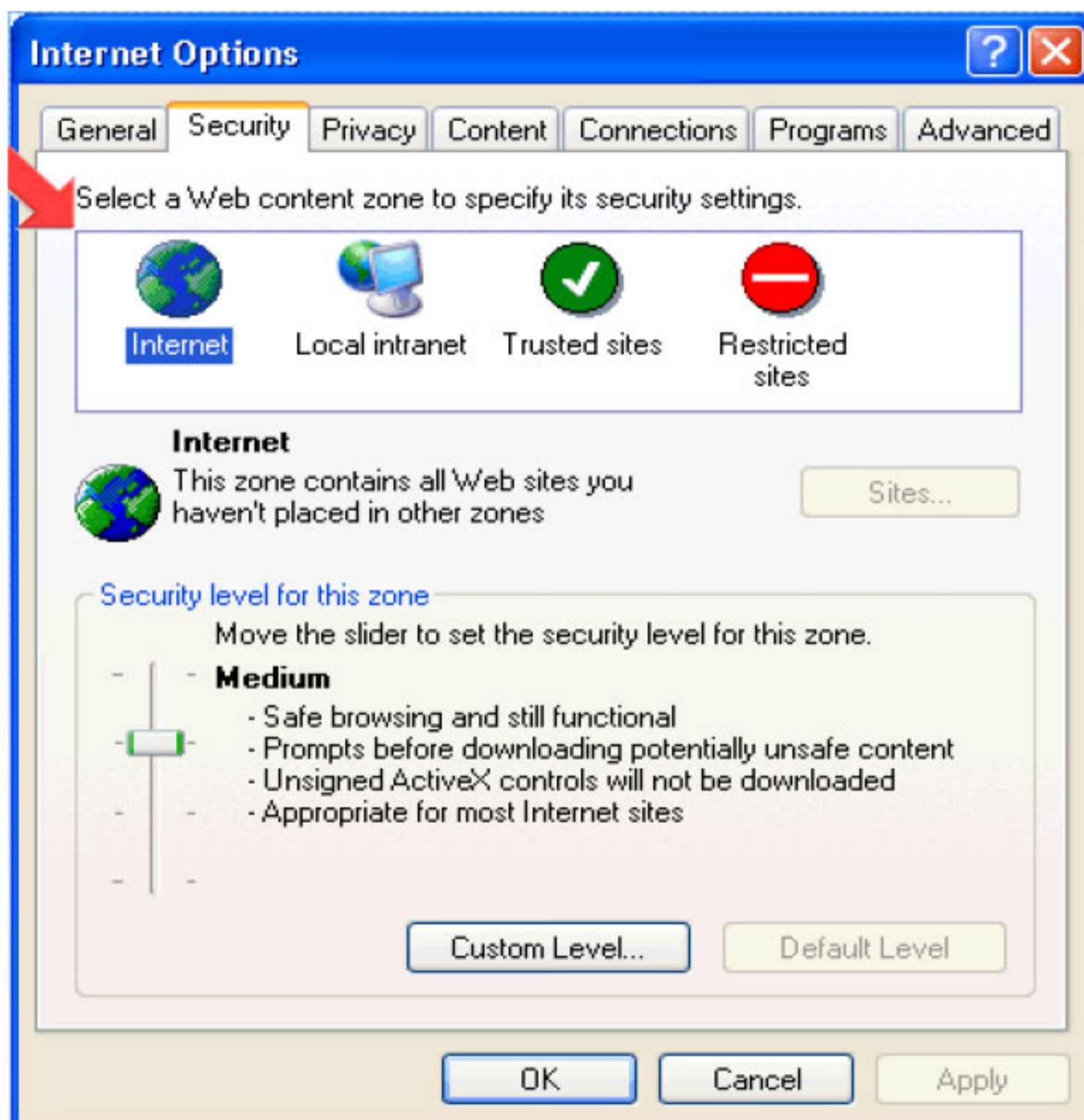
**Telkom**

# MS Internet Explorer

## Internet Security Settings

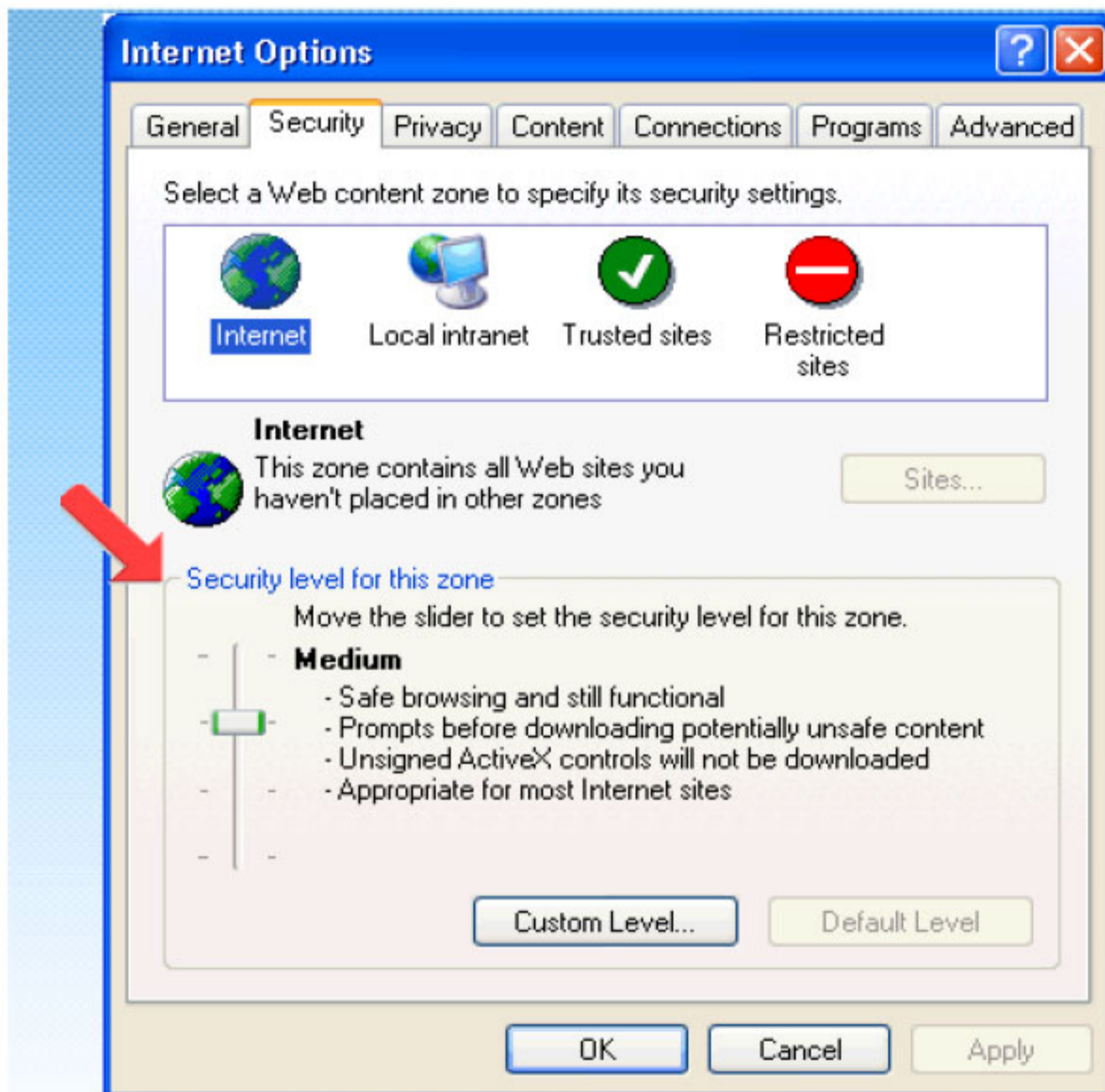
### Step 1 of 4:

Here you can specify the security settings for each web content zone.



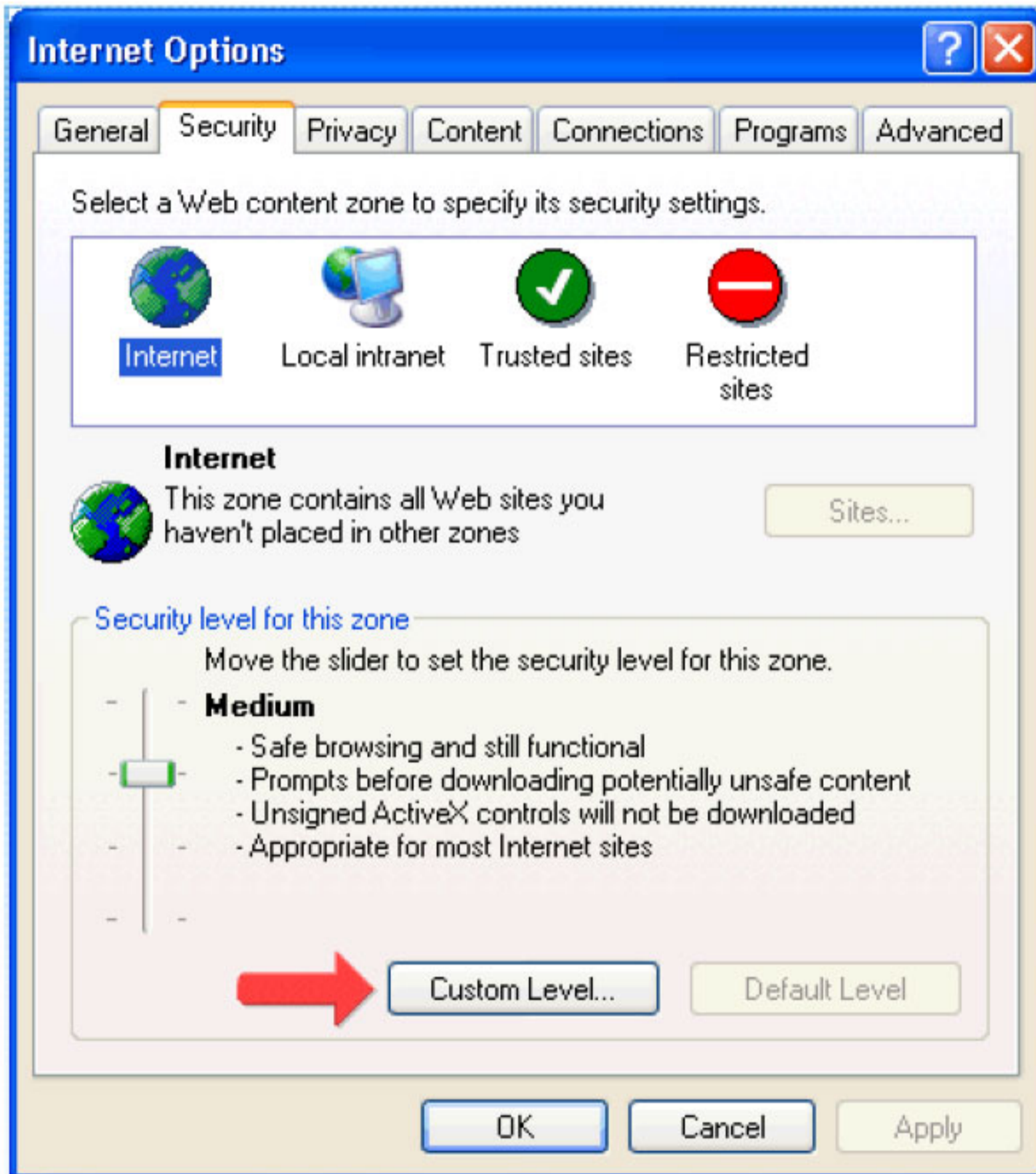
Step 2 of 4:

Here you can adjust the bar to set the security level between High and Low.



Step 3 of 4:

Here you can also choose between a custom settings or change back to the default settings. The default button is currently unavailable as the current setting is at default.



Step 4 of 4:

Click on the "Privacy" tab.

