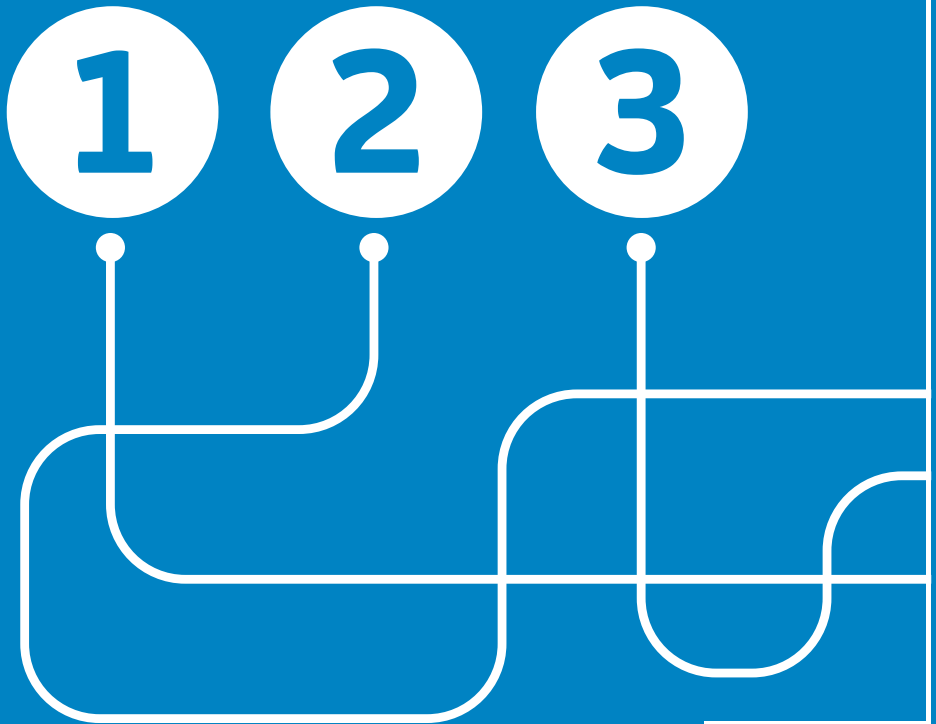


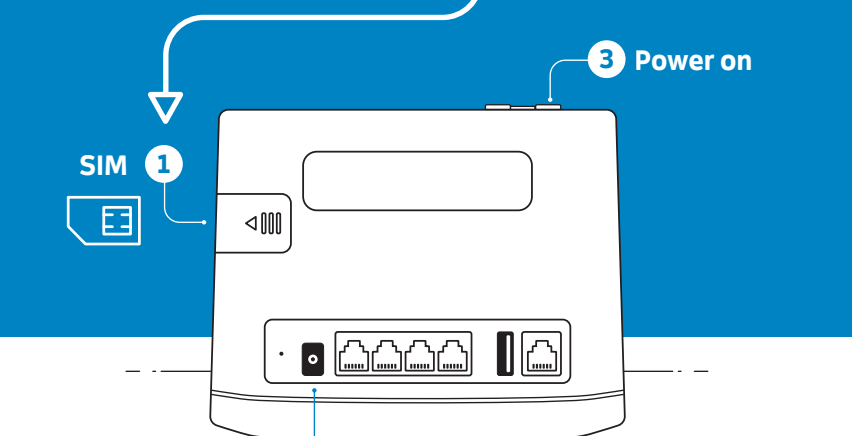
Fixed wireless broadband

B315 router APN settings

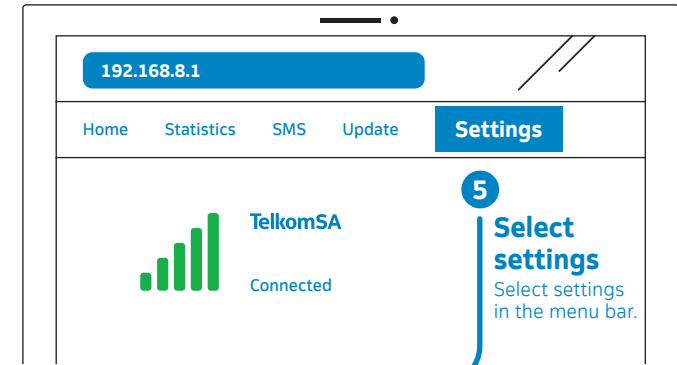
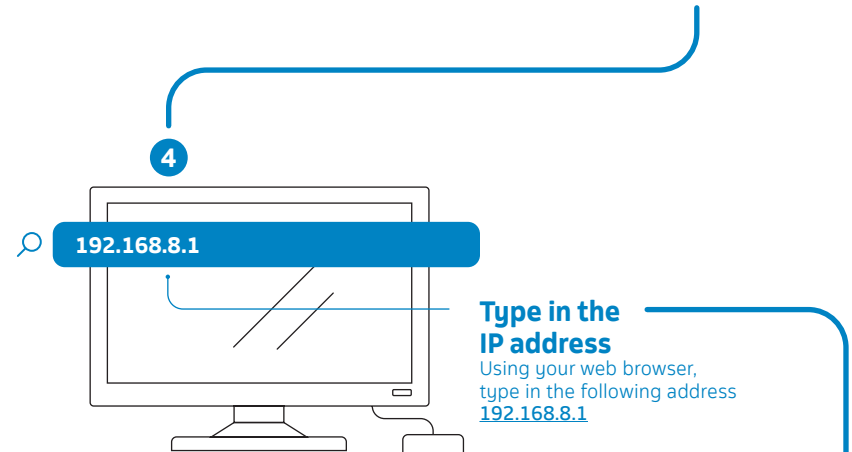


Telkom

The following steps will have you up and running in no time at all.



- 1 Insert SIM**
Insert the SIM in the slot provided.
- 2 Power cable**
Insert the power cable and connect to the mains.
- 3 Power cable**
Press and hold the power button for 2 seconds.



6 Find your user name and password
You can find this info on the bottom of your router.



7 User name and password

Log in

User Name
Admin

Password
Admin

Log in Cancel

Enter 'Admin' on both user name and password.
Note: The customer can change the password for security reasons.

8 Select 'New Profile'

Configure profile settings

Profile name

User name

Password

APN:

New profile Next

9 Set up new profile

New profile

Profile name FWB

User name

Password

IP type IPv4

APN: TelkomInternetfla

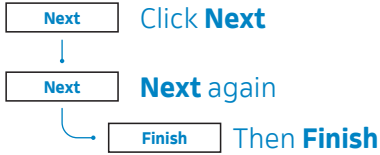
Save Cancel

- Type 'FWB' in the profile field
- Type 'TelkomInternetfla' in the APN field

Select save

Note: APN input is case sensitive

10 Final steps



11

Success

You may browse the Internet

12

Connect more users

To connect more users, use the Wi-Fi key underneath the device as the password.

