

HOME & BUSINESS

# Bookmark a page

How to bookmark a page  
or add to page favourites  
on MS Internet Explorer

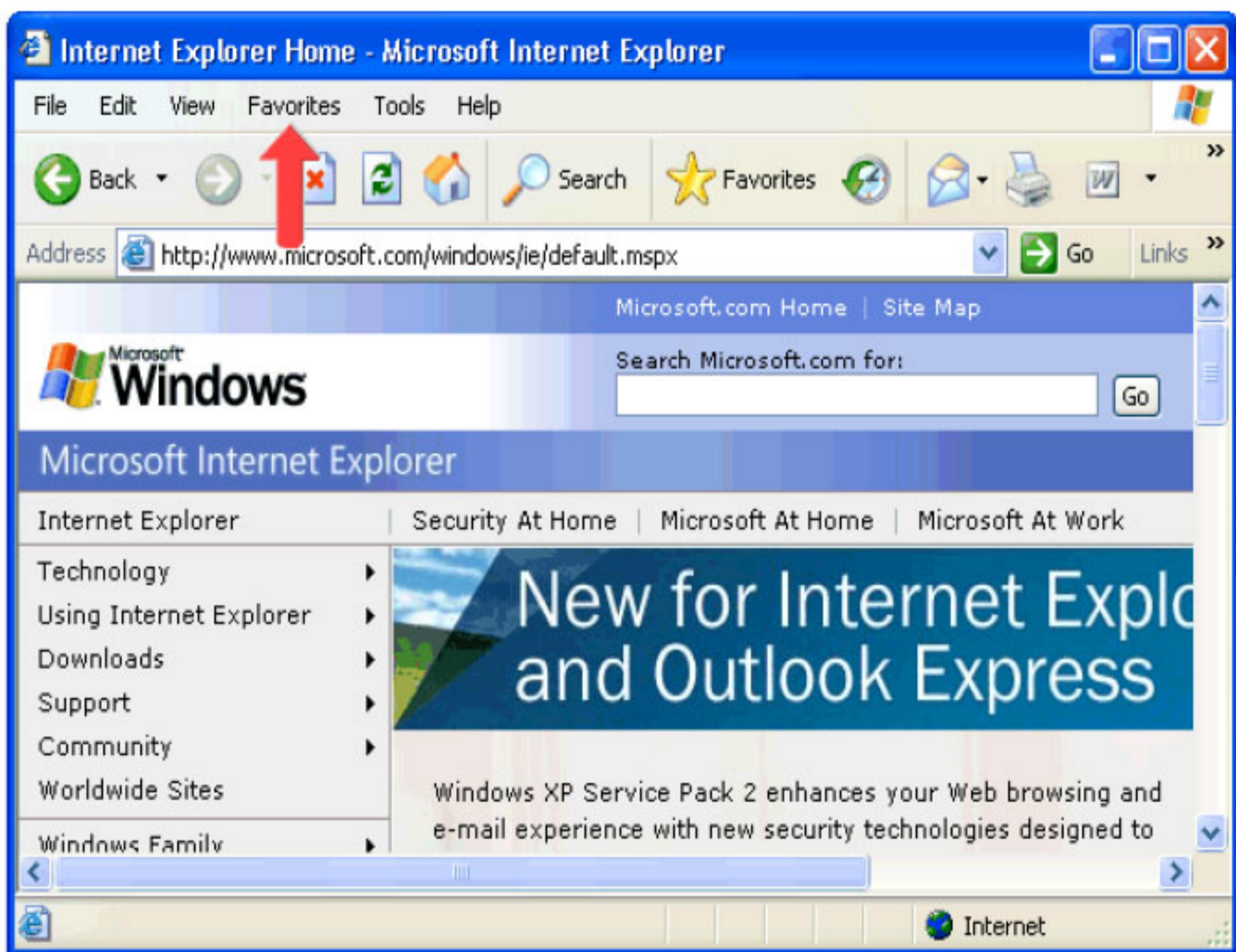
**Telkom**

# MS Internet Explorer

## Bookmark a Page

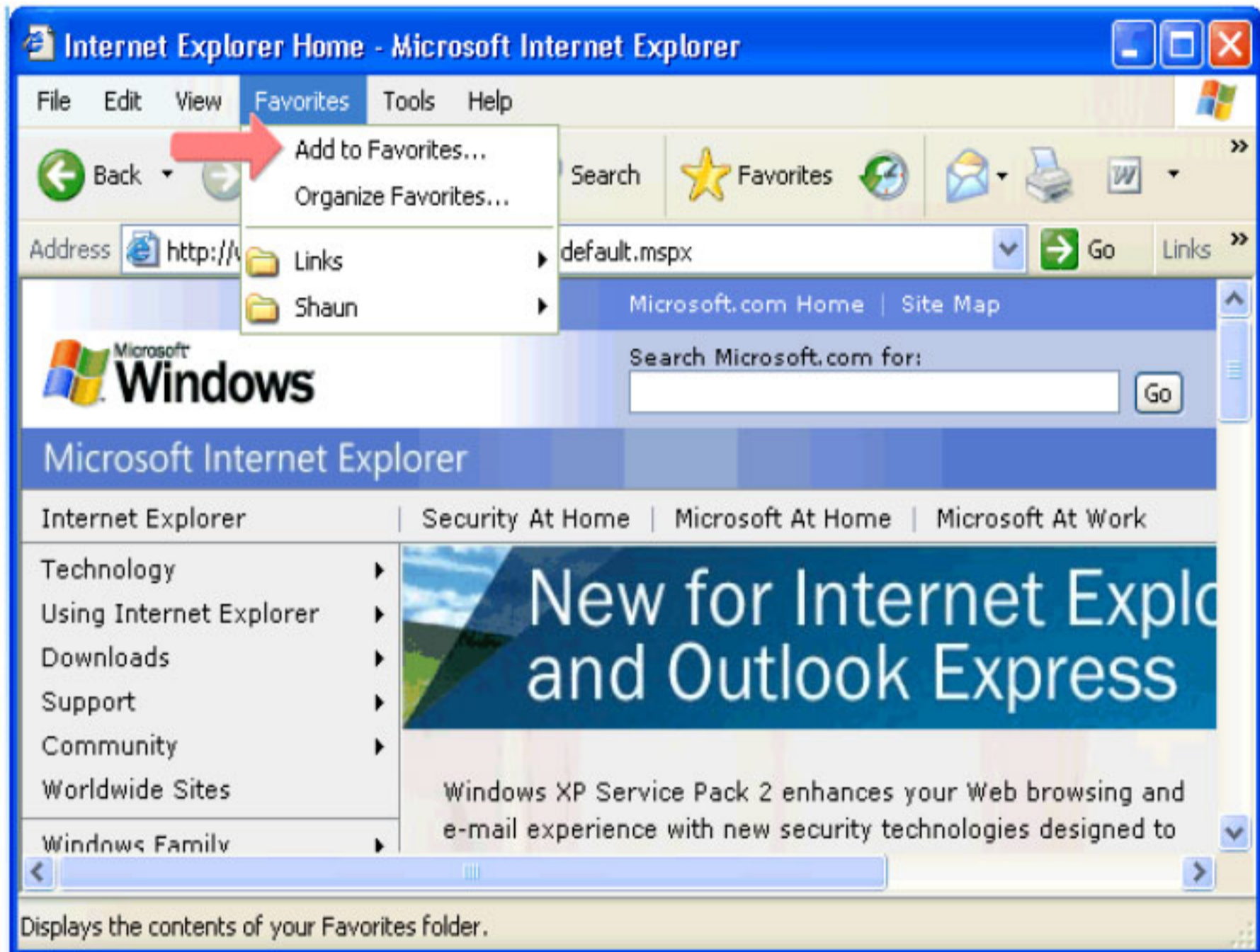
### Step 1 of 5:

Click on the "Favourites" drop-down toolbar.



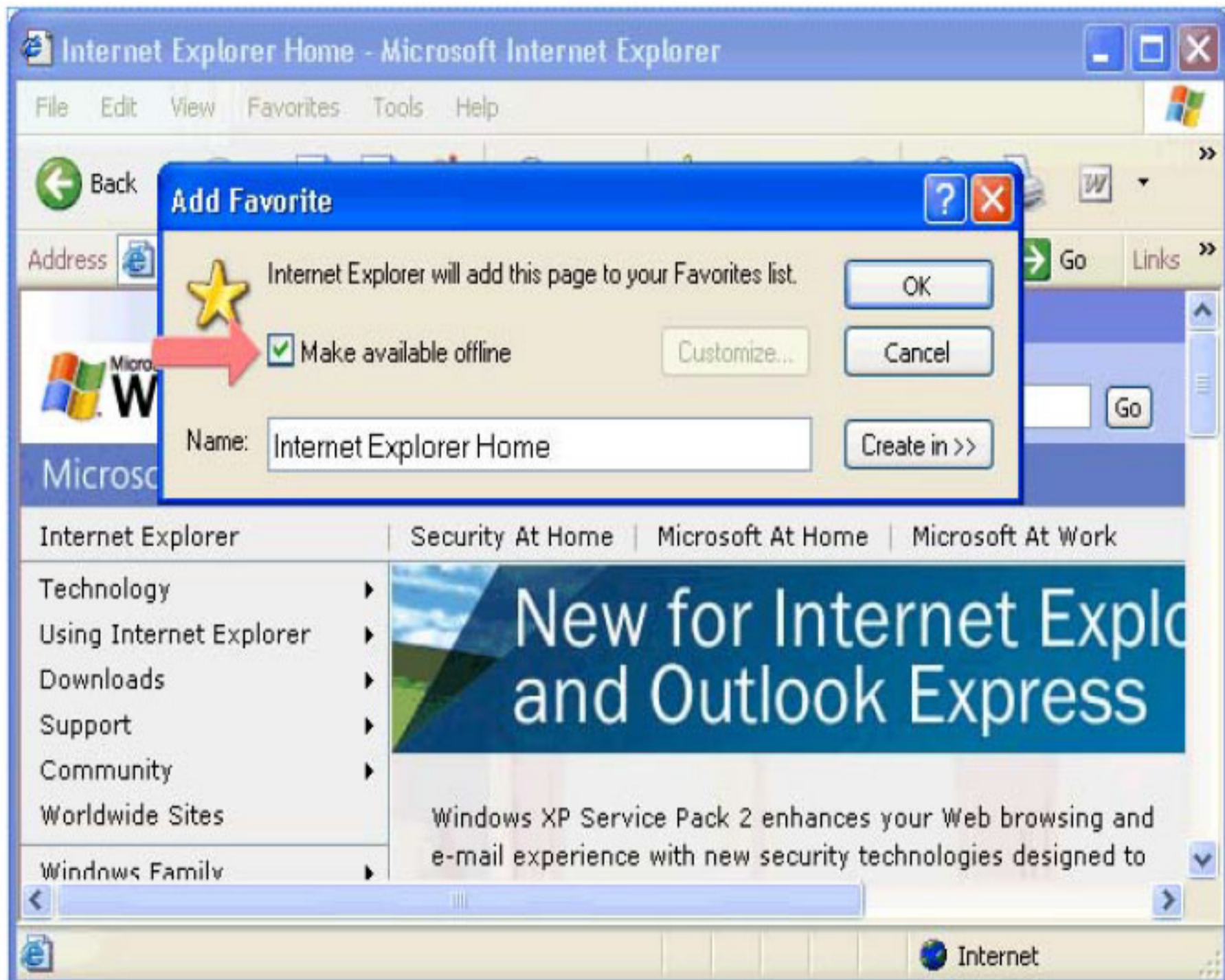
## Step 2 of 5:

Click on "Add to Favourites..."



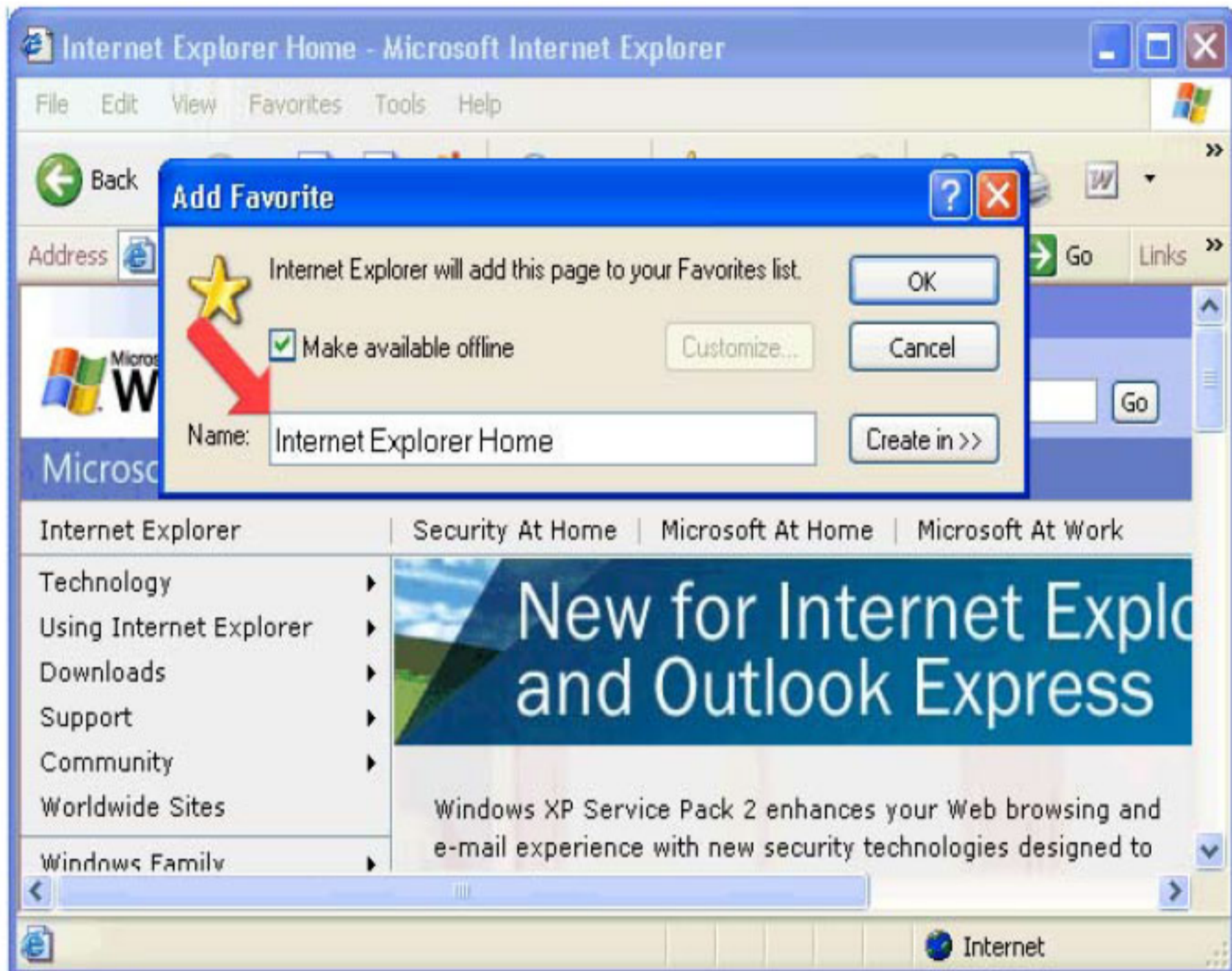
## Step 3 of 5:

**Check this box to make the website available offline.**  
**This means that the website can be displayed without an connection to the Internet.**



Step 4 of 5:

Here you can enter the name in which the website must be saved. For this example we have entered "Internet Explorer Home".



Step 5 of 5:

Click on "Ok" to save the website.

